



International Green Energy Expo & Conference 2026

# GREEN ENERGY EXPO

*PV · ESS · Battery · WP · FC · Smart Grid · Renewables*

---

**April 22<sup>nd</sup> (Wed) ▶ 24<sup>th</sup> (Fri), 2026 · EXCO**

---

**Exhibitors  
Manual**

# **【Exhibitors Manual】**

[www.greenenergyexpo.co.kr/eng](http://www.greenenergyexpo.co.kr/eng)

First and foremost, your participation in the 23rd International Green Energy Expo & Conference is greatly appreciated.

This manual is a necessary guide for preparation and exhibition process, which includes various information and application forms.

Please make sure that all exhibitors of International Green Energy Expo & Conference understand important information and follow the schedule so that the event can go smoothly.

Thank you very much for your support.


**Green Energy Expo Korea 2026 Secretariat**

# - Contents -

<b>I . General Information.....</b>	<b>4</b>
1. Event Outline.....	4
2. Equipment Installation.....	5
3. Exhibition Schedule.....	6
4. Exhibits Carry-Out.....	7
5. Document Submission Deadline.....	7
<b>II. Booth Installation.....</b>	<b>8</b>
1. Basic Booth.....	8
2. Premium Booth.....	9
3. Block Booth Type A.....	10
4. Block Booth Type B.....	11
5. Block Booth Type C.....	12
6. Block Booth Type D.....	13
7. Block Booth Type E.....	14
8. Block Booth Type F.....	15
9. Block Booth Type G.....	16
10. Block Booth Type H.....	17
11. Raw Space.....	18
12. Utilities.....	21
<b>III. Exhibits &amp; Exhibits Handling.....</b>	<b>23</b>
1. Shipping.....	23
2. Insurance.....	24
3. Security.....	24
4. Customs Clearance.....	24
5. Contact Information.....	25
6. Transportation.....	26
7. General Terms & Regulations.....	26
8. Terms & Regulations for Booth.....	28
9. Event Regulations for Exhibitor.....	30
10. Appendix.....	32
<b>IV. Application Form.....</b>	<b>43</b>

# I . General Information

## 1. Event Outline

<b>Title</b>	International Green Energy Expo & Conference 2026
<b>Date &amp; Time</b>	Date: April 22(Wed) ~ 24(Fri), 2026 / 3 days Time: 10:00 ~ 17:00 (The last day: 16:00)
<b>Venue</b>	EXCO East Wing Hall 4,5,6, West Wing Hall 2
<b>Hosted by</b>	EXCO(Daegu Exhibition & Convention Center), MCEE(Ministry of Climate, Energy and Environment)
<b>Organized by</b>	KREA(Korea Renewable Energy Alliance) KNREA (Korea New & Renewable Energy Association) KOPIA (Korea Photovoltaic Industry Association) KHIA(Korea Hydrogen Industry Association)
<b>Supported by</b>	Daegu Metropolitan City, Province of Gyeongsangbuk-Do
<b>Media Partners</b>	PV Magazine, ENF, AVING, Energy Trend, Photon-International, SOLAR JOURNAL, PV-tech, Solartech, SNEC, Renewable Energy Followers, Energy Economic News, The Electronic Times,
<b>Official Sponsors</b>	 <p>Platinum Sponsor: Hanwha Q CELLS, HD HYUNDAI ENERGY SOLUTIONS, Hansol EnergyON, GRANDSUN</p> <p>Gold Sponsor: HUAWEI, SDN, OCI Power, KOGAS, KOREA GREEN SOLAR, Inc., KOREA GREEN ENERGY, Inc.</p> <p>Silver Sponsor: Solplanet, KSTAR, Gaon E&amp;C, GS Global, Kalsun</p> <p>Bronze Sponsor: JASOLAR, risen, GROWATT, GOODWE, solis, SIGENERGY, TCL SOLAR, Jinko Solar, CTR Energy, FOX ESS, DAESUNG ENERGY, LIGHT SUN</p> <p>Coffee Sponsor: TW SOLAR, GROWATT</p>

### 1.4.Supporters

MOTIE (Ministry of Trade, Industry and Knowledge Energy), MCT(Ministry of Culture and Tourism), MEST (Ministry of Education, Science and Technology), MLTM (Ministry of Land, Transport and Maritime Affairs), MEST (Ministry of Education, Science and Technology), ME (Ministry of Environment), MIFAFF (Ministry for Food, Agriculture, Forestry and Fisheries), KFS (Korea Forest Service), KMA (Korea Meteorological Administration), KETEP (Korea Institute of Energy Technology Evaluation and Planning), KEMCO (Korea Energy Management Corporation), KEPSCO (Korea Electric Power Corporation), KOGAS (Korea Gas Corporation), KDHC (Korea District Heating Corporation), KWRC (Korea Water Resources Corporation), KHNP (Korea Hydro & Nuclear Power Co., Ltd), KOMIPO (Korea Midland Power Co., Ltd.), KEEI (Korea Energy Economics Institute), KIER (Korea Institute of Energy Research), KNREA (Korea New & Renewable Energy Association), KDHA (Korea District Heating Association), ESCO (Energy Service Company Association), KEMEA (Korea Energy Management Engineering Association), KPX (Korea Power Exchange), KSNRE (The Korean Society for New and Renewable Energy), KRAAC (Korea Refrigeration & Air-conditioning Assessment Center), KBCSD (Korea Business Council for Sustainable Development), KSGI (Korea Smart Grid Institute), KSES (Korea Solar Energy Society), KSGEE (Korea Society of Geothermal Energy Engineers), SAREK (The Society of Air-conditioning and Refrigeration Engineers of Korea), KECA (Korea Electrical Contractors Association), KIRA (Korea Institute of Registered Architects), KEEA (Korea Electric Engineers Association), KSGA (Korea Smart Grid Association), KSNRE (The Korean Society for New and Renewable Energy), KSES (The Korean Solar Energy Society), KSGEE (Korea Society of Geothermal Energy Engineers), SAREK (The Society of Air-conditioning and Refrigerating Engineers of Korea), ISES (International Solar Energy Society), ENET (Korea NGO's Energy Network), KEF (Korea Energy Foundation) UNEP (United Nations Environment Program), ISCI (International Solar Cities Initiative), Green Korea United, Energy & Peace

## 2. Equipment Installation

Section		Period		Remarks	Note	
Shell Booth	East wing Installation Construction (3 days)		April 19(Sun) (08:00~20:00) April 20(Mon) (08:00~20:00) April 21(Tue) (08:00-12:00)	Carpet/Booth Installation	Booth maker	
	West wing Installation Construction (2 days)		April 20(Mon) (08:00~20:00) April 21(Tue) (08:00-12:00)			
	Booth Interior Setup		April 21(Tue) (12:00-22:00)	Interior Equipment Installation	Exhibitors	
Customized Booth	East wing Installation Construction (3 days)		April 19(Sun) ~ 21 (Tue) April 19(Sun) (08:00~20:00) April 20(Mon) (08:00~20:00) April 21(Tue) (08:00~22:00)	Equipment Installation	Exhibitors Booth maker	
	West wing Installation Construction (2 days)		April 20(Mon) ~ 21(Tue) April 20(Mon) (08:00~20:00) April 21(Tue) (08:00~22:00)	Equipment Installation		
Electricity	Main Line Construction		April 19(Sun) ~ 21(Tue) (08:00-16:00)	Main Line Installation to Booth	Booth maker	
	Booth Construction	Shell Booth	April 19(Sun) ~ 21(Tue) (08:00-16:00)	Installation of Internal Wiring & Lighting	Booth maker	
		Customized Booth	April 21(Tue) (08:00-22:00)		Exhibitors	
	Power Supply		April 21(Tue) (17:00 ~ )	After completion of Installation	Booth maker	
Internet	Wiring Work		East Wing	April 19(Sun) ~21(Tue) (08:00~18:00)	Line Construction	Booth maker
			West Wing	April 20(Mon) ~21(Tue) (08:00~18:00)		
	Internet Connection		April 21(Tue) (17:00 ~ )	After completion of Line Construction		
Plumbing / Compressor	Pipe Installation Construction		East Wing	April 19(Sun) ~21(Tue) (08:00-18:00)		Booth maker
			West Wing	April 20(Mon) ~21(Tue) (08:00-18:00)		
Carrying display product	Heavy Product (Shell booth/by vehicle)		April 21(Tue) (08:00~14:00)		No vehicles allowed in the hall from <b>14:00 on April 21 (Tue)</b>	Exhibitors
	Heavy Product (Customized booth/by vehicle)		April 20(Mon) (08:00~20:00)	April 21(Tue) (08:00~14:00)		
	Light Weight Product		April 21(Tue) (08:00~20:00)			
Pass Distribution		April 21(Tue) (13:30~18:00)		Pass for Entrance and Parking Space	Registration Desk (West Wing, Lobby, 1F)	

<b>Final Inspection</b>	April 21(Tue) (17:00~18:00)	Inspection of Display Items, Cleaning of Booth	Exhibitors
		Cleaning of Hallway	Secretariat

※ The schedule above is subject to slight changes depending on the circumstances.

### 3. Exhibition Schedule

Section		Time	Remarks	Note
<b>April 22nd(Wed)</b>	Opening Venue	08:00	Exhibitors, Booth maker Entry allowed	Secretariat
	Preparation for Exhibition	08:00~10:00	Booth Cleaning, Product Display	Exhibitors
	Opening Ceremony	11:00~13:00	Opening Ceremony & VIP Line Tour	Secretariat
	Exhibition	10:00~17:00	-	
<b>April 23rd(Thu)</b>	Preparation for Exhibition	09:00~10:00	Preparation	Exhibitors
	Exhibition	10:00~17:00	-	
<b>April 24th(Fri)</b>	Questionnaire Distribution	14:00	Exhibition Evaluation	Secretariat
	Closing	16:00	No teardown authorized before this time	Exhibitors
	Carry-Out Permit	16:00~19:00	Submission/Confirmation of Carry-Out Report	Secretariat
	Carry Out		Carry-Out of Light Weight Products	Exhibitors

※ The schedule above is subject to slight changes depending on the circumstances.

Please refer to the website: [www.greenenergyexpo.co.kr/eng](http://www.greenenergyexpo.co.kr/eng)

#### 4. Exhibits Carry-Out

Section	Time	Remarks	Note
<b>Packing &amp; Carry-Out of Light Goods</b>	<b>April 24(Fri)</b> 16:00~19:00	Submit Carry-Out Report ⇒ Confirmation from Secretariat	Exhibitors
<b>Carry-Out of Heavy Goods &amp; Dismantling</b>	<b>April 25(Sat)</b> 09:00~18:00	⇒ Carry-Out	

#### 5. Document Submission Deadline

No	Application Form	Deadline	Submission Method	Remark
1	Signboard registration	April 1 (Wed)	Website or e-mail	Mandatory
2	Entry pass issuance & Invitation letter application form	April 1 (Wed)		Mandatory
3	International Buyer Recommendation Letter	March 30 (Mon)		Optional
4	Banner Advertisement Application	April 1 (Wed)		Optional
5	Interpreter Service Application Form			Optional
6	ADDITIONAL UTILITY SERVICE application form (Including Barcode System)	April 10 (Fri)		Optional
7	Carry-out Report Form	On-Site	On-site Submission	Mandatory
8	Business Result Report Form			(on-site submission)
9	Application for Overtime Work			Mandatory (necessary)

## II. Equipment Installation

### 1. Booth Installation

#### A. Basic Booth

- Aeroview



\* Since the image above is provided to help your understanding, it may be slightly different from the actual construction.

- Provision

	Basic type(1 booth)
Including	<ul style="list-style-type: none"> <li>●9m<sup>2</sup>(3m×3m)</li> <li>●2.4mH partition</li> <li>●Carpet(Pytex)</li> <li>●Company Signage(Name Board)</li> <li>●Booth Number Signage</li> <li>●Double socket(220v) 1 Unit</li> <li>●Basic light(Fluorescent tubes 2 units(40W), Spotlight 3 units(100W))</li> <li>●Power Supply 1Kw</li> <li>●1 Information Desk, 1Chair (Exhibitor)</li> </ul>

## B. Premium Booth

- Aeroview



\* Since the image above is provided to help your understanding, it may differ slightly from the actual construction.

- Provision

	Premium type(1 booth)
Including	<ul style="list-style-type: none"> <li>●9m<sup>2</sup>(3m×3m)</li> <li>●2.4mH partition</li> <li>●Carpet(Pytex)</li> <li>●Company Signage(Name Board)</li> <li>●Booth Number Signage</li> <li>●Double socket(220v) 1 Unit</li> <li>●Basic light(Fluorescent tubes 4 units(40W), Spotlight 6 units(100W))</li> <li>●Power Supply 1kW</li> <li>●1 Information Desk, 1Chair (Exhibitor)</li> <li>●1 Consulting Table, 4Chairs (Exhibitor)</li> </ul>

### C. Block Booth Type A

- Aeroview



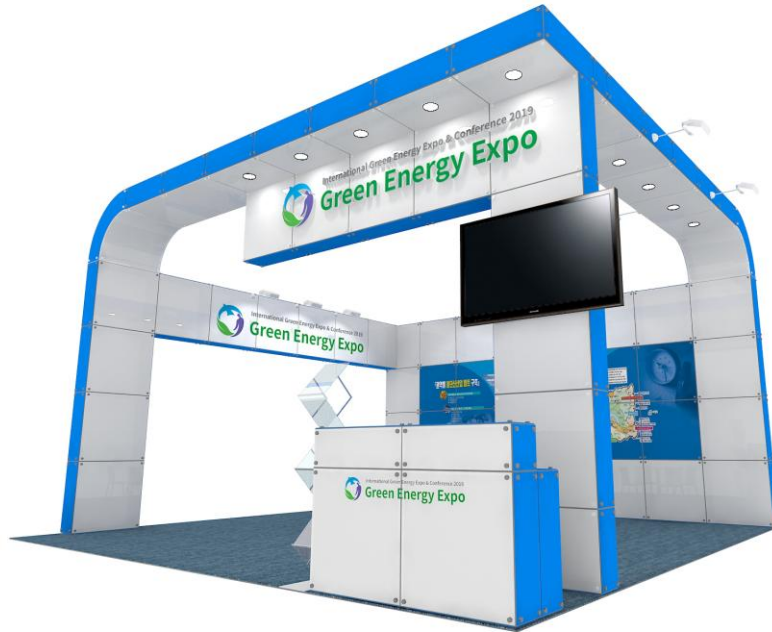
\* Since the image above is provided to help your understanding, it may differ slightly from the actual construction.

- Provision

Block booth type A (2booths)	
Including	<ul style="list-style-type: none"> <li>● 18m<sup>2</sup>(6m×3m)</li> <li>● Carpet(Pytex) (<b>Designated color</b>)</li> <li>● 2 Scotch Signboards</li> <li>● Double socket(220v) 2 Units</li> <li>● Basic light(Fluorescent tubes 24 units(40W), 8 LED spots, 4 LED downlights)</li> <li>● Power Supply 1kW</li> <li>● 1 Information Desk, 1Stool (<u>Exhibitor</u>)</li> <li>● 1 Consulting Table, 3Chairs (<u>Exhibitor</u>)</li> <li>● 2 Actual Images</li> <li>● 1 Wall-mounted TV</li> <li>● 1 Catalogue stand</li> </ul>

## D. Block Booth Type B

Aeroview



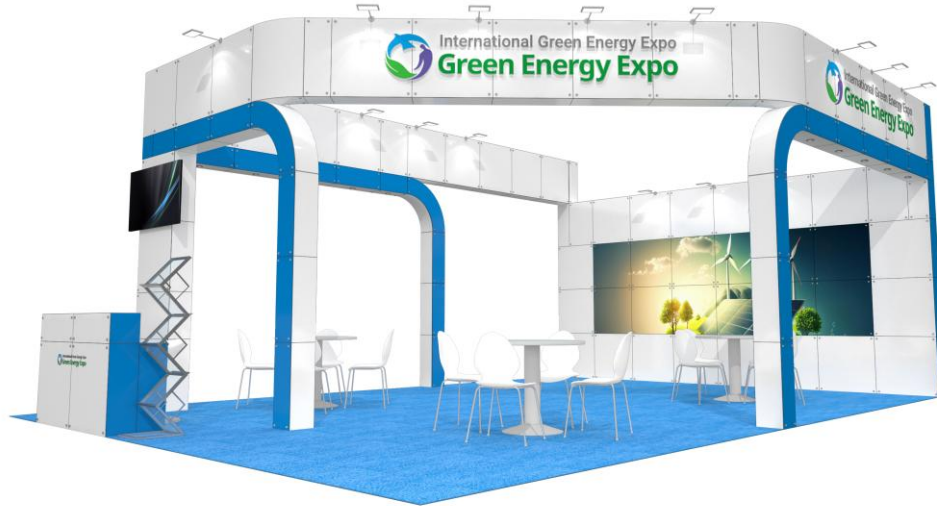
\* Since the image above is provided to help your understanding, it may differ slightly from the actual construction.

Provision

	Block booth type B (4booths)
Including	<ul style="list-style-type: none"> <li>● 36m<sup>2</sup>(6m × 6m)</li> <li>● Carpet(Pytex) (<b>Designated color</b>)</li> <li>● 2 Scotch Signboards, 2 Sheet Signboards</li> <li>● Double socket(220v) 3 Units</li> <li>● Basic light(Fluorescent tubes 24 units(40W), 14 LED spots, 10 LED downlights)</li> <li>● Power Supply 1kW</li> <li>● 1 Information Desk, 1Stool (<u>Exhibitor</u>)</li> <li>● 2 Consulting Tables, 6Chairs (<u>Exhibitor</u>)</li> <li>● 2 Actual Images</li> <li>● 1 Wall-mounted TV</li> <li>● 1 Catalogue stand</li> </ul>

## E. Block Booth Type C

○ Aeroview



\* Since the image above is provided to help your understanding, it may differ slightly from the actual construction.

○ Provision

	Block booth type C (6booths)
Including	<ul style="list-style-type: none"> <li>● 54m<sup>2</sup>(9m × 6m)</li> <li>● Carpet(Pytex) (<b>Designated color</b>)</li> <li>● 2 Scotch Signboards, 2 Sheet Signboards</li> <li>● Double socket(220v) 3 Units</li> <li>● Basic light(Fluorescent tubes 24 units(40W), 18 LED spots, 10 LED downlights)</li> <li>● Power Supply 1kW</li> <li>● 1 Information Desk, 1Stool (<u>Exhibitor</u>)</li> <li>● 3 Consulting Tables, 9Chairs (<u>Exhibitor</u>)</li> <li>● 2 Actual Images</li> <li>● 1 Wall-mounted TV</li> <li>● 1 Catalogue stand</li> </ul>

## F. Block Booth Type D

○ Aeroview



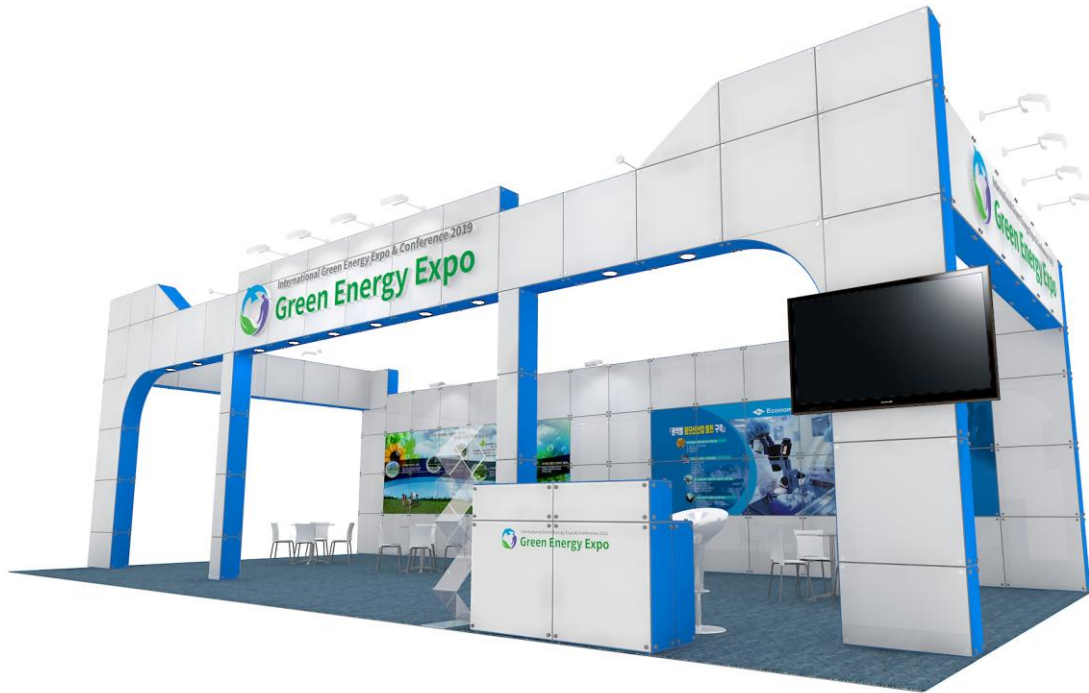
\* Since the image above is provided to help your understanding, it may differ slightly from the actual construction.

○ Provision

	Block booth type D (6booths)
Including	<ul style="list-style-type: none"> <li>● 54m<sup>2</sup>(9m × 6m)</li> <li>● Carpet(Pytex) (<b>Designated color</b>)</li> <li>● 2 Scotch Signboards, 2 Sheet Signboards</li> <li>● Double socket(220v) 3 Units</li> <li>● Basic light(Fluorescent tubes 24 units(40W), 18 LED spots, 10 LED downlights)</li> <li>● Power Supply 1kW</li> <li>● 1 Information Desk, 1Stool (<u>Exhibitor</u>)</li> <li>● 3 Consulting Tables, 9Chairs (<u>Exhibitor</u>)</li> <li>● 2 Actual Images</li> <li>● 1 Wall-mounted TV</li> <li>● 1 Catalogue stand</li> <li>● LED Electronic Board (4.5m × 2m)</li> </ul>

## G. Block Booth Type E

Aeroview



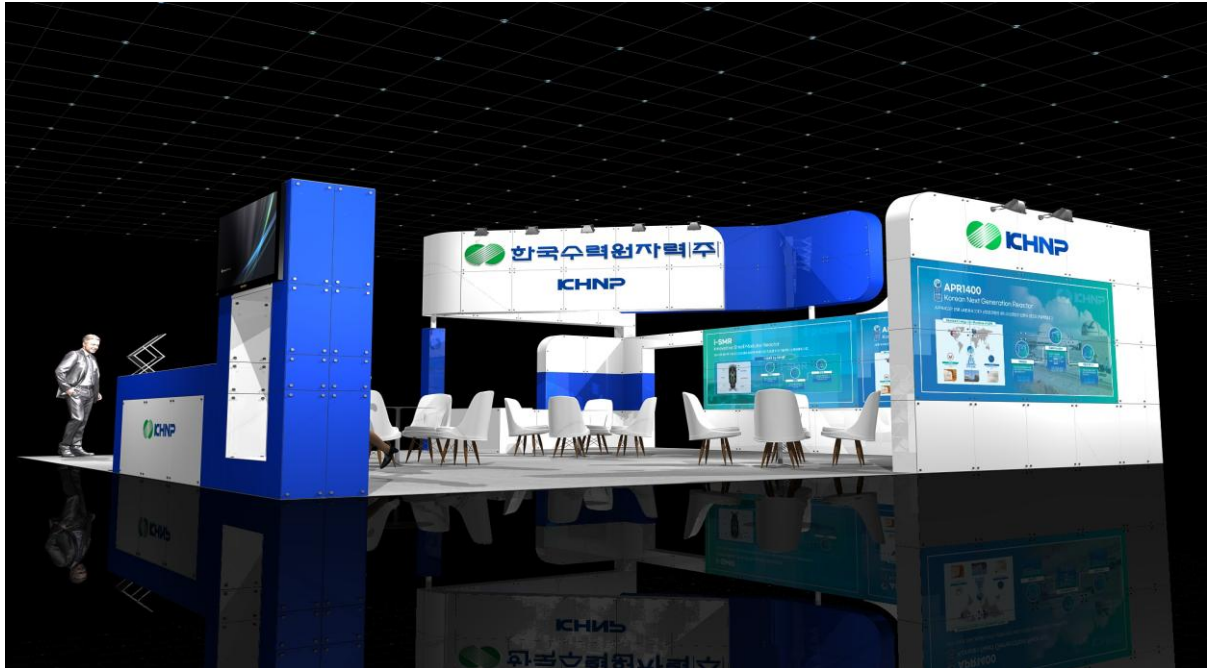
\* Since the image above is provided to help your understanding, it may differ slightly from the actual construction.

Provision

	Block booth type E (8booths)
Including	<ul style="list-style-type: none"> <li>● 72m<sup>2</sup>(12m × 6m)</li> <li>● Carpet(Pytex) (<b>Designated color</b>)</li> <li>● 2 Scotch Signboards, 2 Sheet Signboards</li> <li>● Double socket(220v) 4 Units</li> <li>● Basic light(Fluorescent tubes 48 units(40W), 22 LED spots, 10 LED downlights)</li> <li>● Power Supply 1kW</li> <li>● 1 Information Desk, 1Stool (<u>Exhibitor</u>)</li> <li>● 4 Consulting Tables, 12Chairs (<u>Exhibitor</u>)</li> <li>● 4 Actual Images</li> <li>● 1 Wall-mounted TV</li> <li>● 1 Catalogue stand</li> </ul>

## H. Block Booth Type F

○ Aeroview



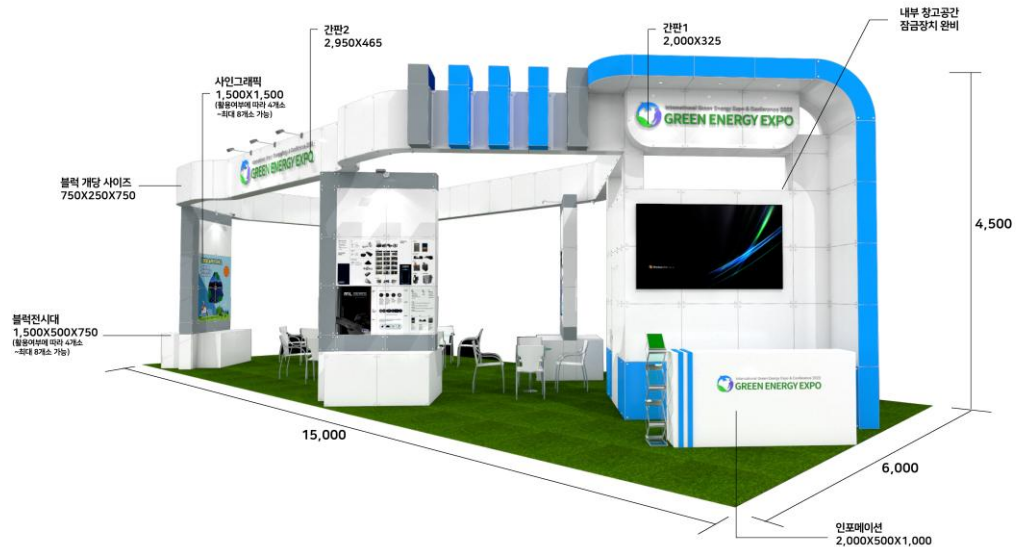
\* Since the image above is provided to help your understanding, it may differ slightly from the actual construction.

○ Provision

	Block booth type F (9booths)
Including	<ul style="list-style-type: none"> <li>● 81m<sup>2</sup>(9m×9m)</li> <li>● Carpet(Pytex) (<b>Designated color</b>)</li> <li>● 1 Scotch Signboards, 7 Sheet Signboards</li> <li>● Double socket(220v) 5 Units</li> <li>● Basic light(Fluorescent tubes 72 units(40W), 16 LED spots)</li> <li>● Power Supply 1kW</li> <li>● 1 Information Desk, 4 Stool (<u>Exhibitor</u>)</li> <li>● 4 Consulting Tables, 12 Chairs (<u>Exhibitor</u>)</li> <li>● 4 Actual Images</li> <li>● 1 Wall-mounted TV</li> <li>● 1 Catalogue stand</li> </ul>

## I. Block Booth Type G

○ Aeroview



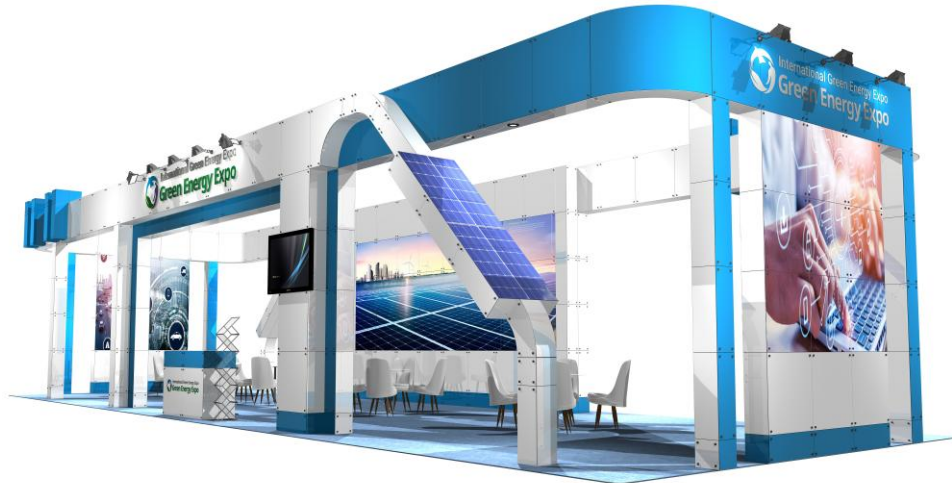
\* Since the image above is provided to help your understanding, it may differ slightly from the actual construction.

○ Provision

Block booth type G (10booths)	
Including	<ul style="list-style-type: none"> <li>● 90m<sup>2</sup>(15m×6m)</li> <li>● Carpet(Pytex) (<b>Designated color</b>)</li> <li>● 2 Scotch Signboards, 2 Sheet Signboards</li> <li>● Double socket(220v) 4 Units</li> <li>● Basic light(Fluorescent tubes 64 units(40W), 22 LED spots, 3 LED downlights)</li> <li>● Power Supply 1kW</li> <li>● 1 Information Desk, 1Stool (<u>Exhibitor</u>)</li> <li>● 4 Consulting Tables, 12Chairs (<u>Exhibitor</u>)</li> <li>● 8 Actual Images</li> <li>● 1 Wall-mounted TV</li> <li>● 1 Catalogue stand</li> </ul>

## J. Block Booth Type H

○ Aeroview



\* Since the image above is provided to help your understanding, it may differ slightly from the actual construction.

○ Provision

Block booth type H (12booths)	
Including	<ul style="list-style-type: none"> <li>● 108m<sup>2</sup>(18m×6m)</li> <li>● Carpet(Pytex) (<b>Designated color</b>)</li> <li>● 2 Scotch Signboards, 2 Sheet Signboards</li> <li>● Double socket(220v) 6 Units</li> <li>● Basic light(Fluorescent tubes 56 units(40W), 16 LED spots, 4 LED downlights)</li> <li>● Power Supply 1kW</li> <li>● 1 Information Desk, 1 Stool (<u>Exhibitor</u>)</li> <li>● 4 Consulting Tables, 12 Chairs (<u>Exhibitor</u>)</li> <li>● 6 Actual Images</li> <li>● 1 Wall-mounted TV</li> <li>● 1 Catalogue stand</li> </ul>

\* Exhibitors are not permitted to install additional facilities, or nail and make holes on the walls. If assistance for hanging or displaying is required, please inquire the Secretariat.

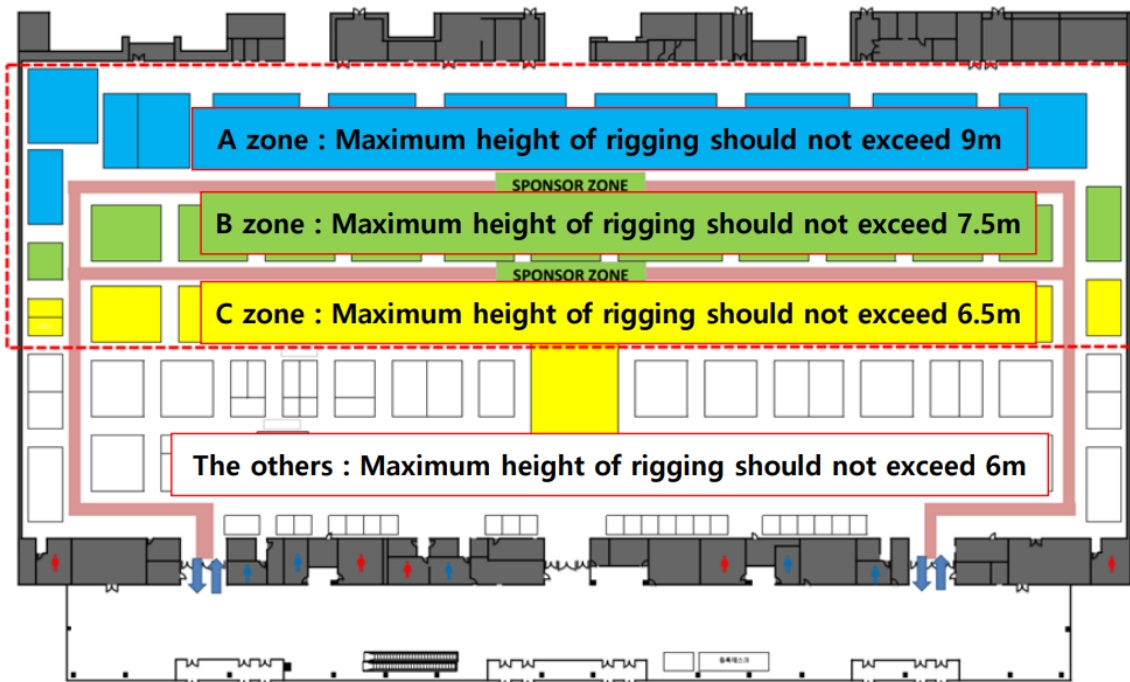
\* Items included are standardized and identical regardless of booth size unless stated otherwise.

## **K. Raw Space**

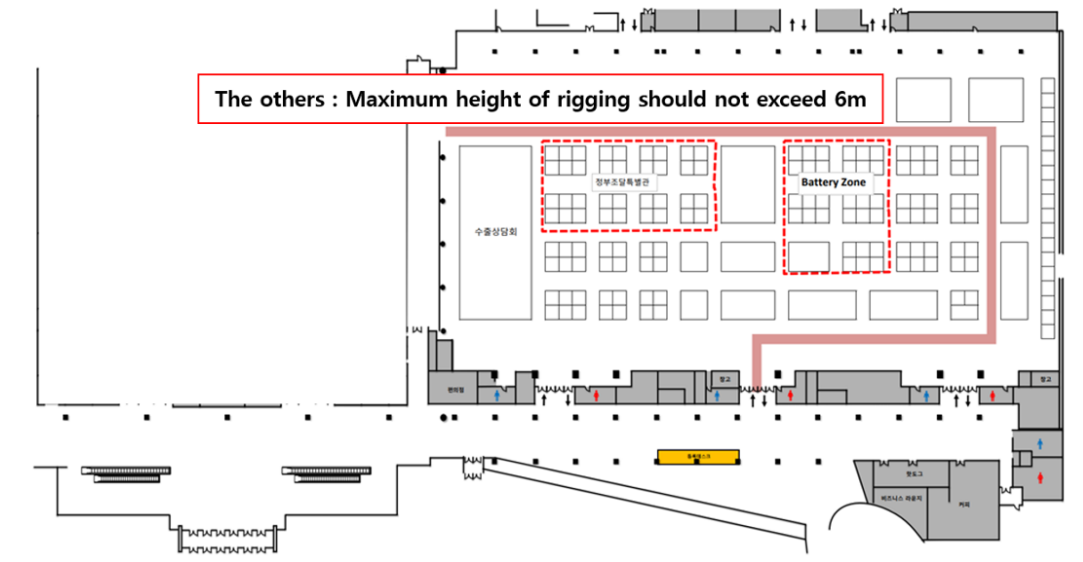
- When constructing a customized booth, you must select one of EXCO's designated registered companies (<https://www.exco.co.kr/eng/facility/sub0505.html>) and conduct the construction yourself.
- The construction contractor that you choose from the list below should submit the documents on VMS. Please choose the contractors on our website ([www.greenenergyexpo.co.kr/eng](http://www.greenenergyexpo.co.kr/eng)). **Exhibitor > Contractors**
- **Raw Space Exhibitors should submit their booth plan (incl. rigging) to the Secretariat by April 15<sup>th</sup> (Wed), 2026.** Even if one of the following documents as required is omitted before the construction, your booth construction may be prohibited.
- Raw Space Exhibitors are not allowed to change the location of incoming lines from electricity facilities and telephone location. The Secretariat may request to adjust or remove any materials and constructions that are not approved.
- **The bordering wall that shares with next exhibitor' booth should be flat and 4m in height. Also, the other side of the wall fronting the next exhibitor's booth should be colored in white.** If non-compliance with the regulation above causes complaints from another exhibitor, the Secretariat will request the exhibitor to take prompt action. In case of modification that cannot be done by exhibitor alone, the exhibitor must cover any and all additional expenses.
- The maximum height of the walls for independent booths cannot exceed 6 meters. Including rigging (hanging), the maximum height is 9 meters in Zone A and 7.5 meters in Zone B.

○ The height of raw space booths / rigging

※ Refer to the floor plan below



※ The others : (Max : 6m, incl rigging)Booth wall height should not exceed 5m.



※ Structure examination reference is necessarily submitted if the height of the booth exceeds 5m or duplex type.

- A zone : (Max : 9m, incl rigging)Booth wall height should not exceed 6m
- B zone : (Max : 7.5m, incl rigging)Booth wall height should not exceed 6m
- C zone : (Max : 6.5m, incl rigging)Booth wall height should not exceed 6m

※ If you wish to engage in a rigging installation, you must apply separately. In addition, fees based on the weight of the rigging materials, as listed below, will be required.

Heavy weight Rigging (Over 100Kg): \$2,000

Light weight Rigging (Up to 100Kg): \$500

○ Booth installation days and hours are as follows.

Booth Type	Installation Period	
Shell booth	April 20(08:00-20:00)	April 21(08:00-12:00)
Customized Booth	April 19(09:00-18:00_rigging only) April 19(13:00~20:00) April 20(08:00-20:00)\ April 21(08:00-22:00)	

○ If allotted construction time is not enough due to unavoidable circumstances, exhibitor must submit ‘Application for Overtime Work’(Application Form 5) and get prior approval. In that case, Additional fees will apply.

○ In case of rigging, exhibitor should obtain safe approval of weight loadings and truss specifications through structural analysis. In the situation that weight of rigging exceeds 100kg in total, exhibitor should submit safety pledge and reports of structure analysis to the secretariat.

※ **Inquiries**

- Secretariat (Tel: +82-53-601-5061) (E-Mail: [jylee@exco.co.kr](mailto:jylee@exco.co.kr))

## **2. Utilities**

### **A. Electricity**

**(Additional electricity requires prior application and payment.)**

#### **a. Standard supplies of voltage available for use are:**

- **220 Volt Single Phase 60 Hz**
- **220 Volt Three Phase 60 Hz**
- **380 Volt Three Phase 60 Hz**
- **380 Volt Three Phase 60 Hz(for usage of rigging)**

#### **b. Precautions during construction**

- **The time during which electricity will be supplied is 09:00-18:30. In case 24-hour supply is needed, Exhibitors must apply in advance.**
- **In case an exhibitor exceeds allotted power supply, as this may cause damage to other exhibitors, please apply for enough electric power.**
- **Materials used in electricity construction MUST be new and international standard products.**
- **Circuit breaker MUST be placed at least 30 centimeters above the floor.**
- **Please notify the Organizer of any change or special installations occurring. The Organizer has appointed an official contractor to supply electric power connected from service lines to appropriate switch or junction box inside the individual booth.**
- **No other contractors are permitted to make connections to the electric power supply of the exhibition hall. It is each Exhibitor's responsibility of electric wiring within the stand area.**

#### **※ Independent booths are required to apply for electricity.**

- **For standard booths, the basic electrical work refers to the installation of power supply lines and a No-fuse breaker inside the booth, which will be carried out by the organizer.**
- **For independent booths, the basic electrical work refers to the placement of the power supply line at a designated location inside the booth.**
- **The power supply will be as described below. If the exhibitor needs to change the voltage or cycle for operating the exhibits, the exhibitor will be responsible for installing transformers or converters at their own cost.**

### **B. Water & Drains (Additional charges apply)**

- #### **a. Water & Drains will be supplied to Exhibitors from floor box by official contractor.**

- b. In case shortage of water pressure may cause machinery malfunction, Exhibitors should equip protective device at Exhibitors' expense.
- Water Pressure: 1 kg/cm<sup>2</sup>
  - Water Supply Size: 15 mm(Ø)
  - Drainage pipe size: 50mm(Ø)

### **C. Compressed Air (Additional charges apply)**

- a. Upon request, compressed air will be supplied to the booth from floor B0x.
- Volume: 10.2 m<sup>3</sup>/min (Max.)
  - Pipe Size: 20mm (Ø)
  - Air Pressure: 5-6Kg/m<sup>3</sup> (Max.)
- b. In case decreasing air pressure may cause machinery malfunction, Exhibitors are advised to equip protective device at Exhibitors' expense.

### **D. LAN (Additional charges apply)**

- a. Exhibitors should apply for each LAN port to use Internet.  
b. LAN will be supplied to the booth with its own IP per 1 port.

**※ For independent booths, it is essential to inform the organizer of the specific location where the LAN cable will be used.**

### **E. Customer management barcode system**

- a. 'BAR-CODE SYSTEM' - visiting customer management by exhibitor
- We operate a computerized registration system that organizes the information of all visitors to this exhibition into a DB. In other words, information such as the visitor's company, name, department, position, address, telephone, fax, E-mail, field of business, occupation, field of interest and purpose of viewing, and customer consultation details for each participating company are computerized and provided as DATA.
- b. How to use (Additional charges apply)
- If you read the nametag of the booth visitor with the mobile laser hand-terminal, you can receive detailed information about the visitor approximately one week after the event ends.
  - The existing CCD-type hand-terminal had difficulties in reading barcodes, but the laser-type hand-terminal, which is provided this year, can read barcodes from a long distance at once, so you can use it easily.
  - Detailed visitor information can be downloaded as an Excel file.

### III. Exhibits & Exhibit Handling

#### 1. Shipping

##### A. Documents required

<b>Bill of Lading</b>	<b>1 Original / 4 Copies</b>
<b>Commercial Invoice</b>	<b>1 Original / 4 Copies</b>
<b>Packing List</b>	<b>1 Original / 4 Copies</b>

##### B. Exhibitors and their agents must be aware of the following information to ensure smooth handling of exhibits.

###### a. Consignee

- Exhibition Name:  
INTERNATIONAL GREEN ENERGY EXPO & CONFERENCE 2026
- Name of Exhibitor:
- Booth No.:

###### b. Notify Party

Refer to the designated service company (transportation and customs clearance)

###### c. Destination

- For Air Freight: Incheon Airport
- For Ocean Freight: Busan Port

###### d. You shall write the item list and price in English and USD on the shipping documents.

###### e. Price list of exhibits should be written in CIF Incheon Airport on the invoice. Although the products are of no commercial value, they should still have the actual price on them.

###### f. All exhibitors must inform of the shipping documents and shipping schedules by fax once the exhibiting goods are shipped, especially for those that may arrive later than the expected date. It must be informed in advance by fax.

**※ Ocean Freight: Before 10 days / Air Freight: Before 3 days**

##### C. Official Forwarder & Shipping Company

**For shipping instruction, please contact the official forwarder.**

###### \* Official forwarder

- Company Name : **Kemilee**
- Address : F2 -201, 37, Seongsui-ro 22-gil, Seongdong-gu, Seoul, Korea
- P.I.C 1 : Eric Jo / [ericjo@kemi-lee.co.kr](mailto:ericjo@kemi-lee.co.kr)
  - Mobile : +82-10-5480-0050
- P.I.C 2 : Lauren Jeong / [lauren@kemi-lee.co.kr](mailto:lauren@kemi-lee.co.kr)
  - Tel / Fax : +82-2-565-3588 / +82-2-533-8458
  - Mobile : +82-10-3396-1432
  - Wechat ID : xiaotuzi75

## **2. Insurance**

Exhibitors are highly recommended to obtain ALL-RISK insurance policies of their goods from departure to final destination after the show.

## **3. Security**

Although EXCO will provide around-the-clock security, Exhibitors are liable for any damages and/or losses of their exhibits during the show. Security enters the exhibition center for the purpose of customs inspection and cross-checking of information, state, and quantity of the goods in time of receiving, returning, and carrying.

## **4. Customs Clearance**

### **A. Bonded Goods**

- a. Simplified clearance of the goods, without the official import clearance, on condition those goods return to overseas country once the exhibition is over. Should there be a buyer for those goods, an official customs clearance is needed afterwards.
- b. During the exhibition, Secretariat accounts for the clearance of those bonded exhibition goods. Therefore, Exhibitors are required to report all the details of the bonded goods to the Secretariat.

### **B. Duty Free Goods**

Following items are NOT subject to customs duties.

- a. Catalogues, Pamphlets, AD materials, etc.
- b. Sample goods and souvenirs (badges, medals, etc. excluding liquor and cigarettes) valued at no more than US\$5 each. Price list must be approved by the customs office.
- c. Total price and the number of paint and wall paper for booth construction must be approved by the customs office.
- d. Disposable products used for the machine assembly in the show must be approved by the customs office.

### **C. Re-Export (Mortgage required)**

According to an agreement to the customs office, the importer shall re-export the goods within the given period.

\* Note: Clearing of goods by re-exporting if they do not belong to the bonded industries (ex. Hotel, general event)

- When the exhibits are needed by the buyers or for demonstration purpose for a fixed period after the exhibition is over.

- Customs inspection is the arrival inspection (difference from bonded clearance) and custom tax is exempt.

- Types of mortgage settlement

- a. Cash mortgage: Based on taxes (only for items valued at under US\$300)
- b. Bank Guarantee: When the bank guarantees the payment
- c. Tax Payment Insurance: Issuance of the payment guarantees insurance

### **D. ATA Carnet: Certificate documents agreed amongst the government**

- a. Clearing by re-reporting if the goods do not belong to the bonded industries
- b. In cases where the importer requires an extra setting of exhibits before the opening of the show.
- c. Period: 6 months in principle, with an allowance of extension.

## 5. Contact Information

### ○International Green Energy Expo & Conference 2026 Secretariat

Address: 10 Exco-ro, Buk-gu, Daegu, Korea (41515)

Website: [www.exco.co.kr](http://www.exco.co.kr) Tel: +82-53-601-5371 Fax: +82-53-601-5069

Part	Name	E-mail	Tel +82-53-601-####
Director	Hyoung Seok, Youn	tlr21@exco.co.kr	5060
Project Manager (sponsorship & Exhibitor)	Ryan, Lee	<a href="mailto:jylee@exco.co.kr">jylee@exco.co.kr</a>	5061
	So Young, Jang	syjang@exco.co.kr	5068
	Ko Eun, Choi	ko9942@exco.co.kr	5065
Manager (Booth installation)	Ryan, Lee	<a href="mailto:jylee@exco.co.kr">jylee@exco.co.kr</a>	5061
Manager (Side event and visitors management)	Ko Eun, Choi	ko9942@exco.co.kr	5065
Manager (Conference)	Na Min, Bae	<a href="mailto:nmbae@exco.co.kr">nmbae@exco.co.kr</a>	5063
	Jiyun, Bae	greencon@exco.co.kr	5380
	Minjeong, Kim	greencon2@exco.co.kr	5381
Manager (Domestic exhibitors management)	Subin, Choi	renew@exco.co.kr	5371
Manager (Public Relations management)	Seorim, Lee	greenad@exco.co.kr	5374
Manager (Sponsor and Accommodation management)	A Young, Kim	greenbd@exco.co.kr	5375
Manager (Overseas exhibitors management)	Ryan, Lee	<a href="mailto:jylee@exco.co.kr">jylee@exco.co.kr</a>	5061

## **6. Transportation**

### **A. Location of departure from Dong-daegu station to EXCO**

After you get off the train, find the Exit 6 and you can wait for where the banner is located (At that place, field agent will wait for you)

### **B. Location of departure from Marriott to EXCO**

You can wait a front of Marriott. Shuttle bus is in front of entrance.

### **C. Location of departure from EXCO to Dong-daegu and Marriott**

People who leave to the Dong-daegu station and Marriott wait for the bus at EXCO's North Road.

There are directions about departure on each bus. So, please take a close look before boarding. (When you get off, Field agent will wait for you)

## **7. General Terms & Regulations**

### **A. Terms of Reference**

a. In the rules and regulations for participation in INTERNATIONAL GREEN ENERGY EXPO & CONFERENCE 2026, the term 'Exhibitor' shall include all employees, independent contractors and agents of any individual company, partner company or organization who have applied for space for the purpose of exhibiting.

b. The term 'Exhibition' shall mean the INTERNATIONAL GREEN ENERGY EXPO & CONFERENCE 2026.

c. The term 'Organizer' shall mean EXCO (Daegu Exhibition & Convention Center) which is authorized to organize the exhibition.

### **B. Application for Participation**

a. All applications for participation shall be made on the prescribed application form, which shall be submitted to the organizer.

b. The contract shall be established when the exhibitor submits the application form duly signed and pays the organizer 50% of the space and/or shell stand costs. The organizer, however, may defer or refuse acceptance of application if sufficient spaces are not available or if organizer considers the announced exhibit is not germane to the exhibition.

### **C. Allocation of Exhibit Space**

a. The organizer shall allocate the space in accordance with the order of application, size of the space applied for, the nature of the exhibits or in the manner the organizer deems fit.

b. The organizer shall reserve the right to change the location and/or the size of the space allocated to the exhibitor at any time prior to the commencement of the build-up of the exhibition, should exceptional circumstances demand, and the exhibitor shall have no claim for compensation as a result of changes.

### **D. Use of Exhibit Space**

a. Exhibitors are bound to exhibit the announced products and to staff the stand with competent personnel during the whole period of the exhibition.

b. All exhibits must accord with the description on the application form, and be related to the theme of the exhibition. Public auctions and retail sales without permission of the organizer are strictly prohibited. If the exhibitor violates the above-mentioned rules, the organizer can stop the exhibitor's activity, remove his/her exhibits or order the dismantling of his/her booth. In this case, the participation fee shall not be refunded and the exhibitor shall have no claim for compensation.

c. The organizer reserves the right to refuse admittance to the exhibition to any person.

d. Exhibitors are not allowed to sublet space allotted to them to other parties, either wholly or in part, without the written consent of the organizer.

- e. Modifications including decorations such as painting the floor, ceiling and pillars will not be permitted, and the exhibitor shall compensate consequent damage to the exhibition hall to the organizer.
  - f. The exhibitor shall conduct and operate its exhibit so as not to annoy, endanger or interfere with the rights of other exhibitors and visitors. Any practice resulting in complaints may be prohibited by the organizer.
  - g. The organizer shall reserve the right to remove exhibits if a complaint of infringement of Intellectual Property Right is filed.
- E. Terms of Payment**
- a. The exhibitor must pay the 50% deposit of the participation fee and/or relevant stand charges at the time of the application and the balance (50% of the total cost) shall be paid not later than **March,6th (Fri). 2026.**
  - b. The participation fee shall be paid by the due date. Otherwise the organizer has the right to cancel the contract. And in case he does, the participation fee already paid will not be refunded.
- F. Breach of Contract and Withdrawal by Exhibitor**
- a. In the event of abandonment or rejection of all allocated space, the organizer has the right to cancel the exhibitor's application. In this case, the participation fee already paid will not be refunded, unless abandonment or rejection of allocated space as a result of force majeure.
  - b. In the event of partial abandonment or rejection of the allocated space, the exhibitor shall forfeit the application fee already paid for the abandoned or rejected space, unless the act of withdrawal was a result of force majeure. And if the participation fee has not been paid fully, the exhibitor shall pay the remaining amount of the participation fee by the due date for all the space initially applied for.
- G. Cancellation and Changes of The Exhibition**
- In the event of the cancellation of the exhibition by the organizer, the participation fee paid will be refunded. But if the cancellation was caused by force majeure, the fee will not be refunded. The organizer reserves the right to change the venue and duration of the exhibition if exceptional circumstances demand. In this case, the fee paid will not be refunded and the exhibitor shall have no claim for the compensation as a result of the changes. The balance of payment will be refunded when exhibitors notify their cancellation three months in advance of the exhibition. The deposit (50%) of the total payment will not be refunded.
- H. Construction and Decoration of Stand and Display**
- All exhibitors must complete their construction and/or decoration, and move-in and display of exhibits by the date and time stipulated by the organizer.
- I. Movement of Exhibits and Stand Fittings**
- Exhibitors shall remove all exhibits and stand fittings from the exhibition hall within the period stipulated by the organizer and indemnify the organizer against any cost incurred by reason of delay or damage to the exhibition hall.
- J. Securities, Risk and Insurance**
- a. The organizer shall reserve right to limit any constructions or demonstrations that pose potential safety hazards.
  - b. The exhibitors shall be held responsible for any loss or theft of, or damage to exhibits, stand fittings or any article belonging to the exhibitor during the construction, exhibition and dismantling periods.
  - c. In the event that the exhibitor intentionally or negligently causes a fire, theft, breakage or other accidents inflicting damages to the organizer or others, the exhibitor shall be responsible for damages. Exhibitors shall be responsible for insuring goods exhibited.
- K. Fire Regulations**
- a. Materials used in stand and display construction must be properly fireproofed in accordance with the regulations of Korea.

b. The organizer has the right, should circumstances necessitate, making changes in the exhibitors stand for fire control.

**L. Supplementary Clauses**

a. Whenever necessary, the organizer shall have the right to issue supplementary regulations in addition to those in the rules and regulations for the participation in INTERNATIONAL GREEN ENERGY EXPO & CONFERENCE 2026 to ensure the smooth management of the exhibition.

b. Any additional written regulation instructions shall form part of the rules and regulations for the participation in INTERNATIONAL GREEN ENERGY EXPO & CONFERENCE 2026 and they shall be binding on the exhibitors.

c. The exhibitor shall also observe the regulations for the management of the exhibition halls of the EXCO.

**M. Arbitration of Disputes**

Any dispute, difference, or question which may arise at any time hereafter between the organizer and the exhibitor touching on the true construction of these terms and conditions for participation or the rights and liabilities of the parties hereto shall be finally settled by arbitration in accordance with the Commercial Arbitration Rules of the Korean Commercial Arbitration Board in Seoul, Korea. The award of the above arbitration shall be final and binding upon both parties.

## **8. Terms & Regulations for Booth**

**A. Requirements in Regulation**

**a. Authorized Space**

Every display item must be arranged in the designated space, and must not hinder the sight or passage of visitors. Any structure that is placed on hallway and carpet in the same color as the pathway is banned. Every item and equipment should not be inflammable.

**b. Layout**

Any items that can be seen from the pathway or other exhibitor's booth should be installed upon exhibitor's payment. Decorative items, lighting fixtures and audio equipment should not disturb other exhibitors or their booths.

**c. Submission of Booth Plan**

Every exhibitor should submit the booth plan with an indication of height and building material to the hall manager of INTERNATIONAL GREEN ENERGY EXPO & CONFERENCE 2026 Secretariat by [April 3rd \(Fri\), 2026](#) in advance.

**d. Structure**

The limitation of height is depending on the booth location. The arrangement of display items or structures should not disturb other booths or hinder passage of visitors.

**e. Arrangement of Exhibiting Items and Viewing**

The displayed items should not create inconvenience to visitors and be kept at least 60 cm away from the booth line. Unless exhibitors conform to this rule, the Secretariat may demand those items to be relocated or removed. This rule is designed to give an equal opportunity to every exhibitor in terms of space and sight.

**(1). Restriction of Sound**

Exhibitors may use audio equipment for promotion provided that they keep the sound down to avoid disturbing other booths.

The secretariat office may intervene to restrict the use of audio equipment should there be any complaints made. Exhibitors are required to register any audio equipment, which they will use during the show. It must be less than 85 db sound level and if there is any equipment that makes a sound louder than 85 db, the secretariat of INTERNATIONAL GREEN ENERGY EXPO & CONFERENCE 2026 may ask users to refrain from using it.

**(2). Safety**

Exhibitors should take necessary safety measures prior to using dangerous equipment.

ment or parts during the show in order to prevent accidents and each exhibitor is responsible for the maintenance and safety of that equipment. (Including containers of hazardous material, x-ray generating machines, inflammable and explosive substance, high-voltage equipment, radioactive material, accelerators, liquid mercury)

**f. Lights**

Flash lights and revolving light equipment are banned from using. The individual lights from one booth should not disturb or damage other booths.

**g. Package Materials (Leaflets and Brochures)**

Every exhibitor is obliged to keep their pathway clean at all times. All materials and items should be placed on designated area and exhibitors need to be careful not to pile goods up in the middle of the pathway.

**h. Changes To Booth Design**

All exhibitors will be required to seek the approval from the INTERNATIONAL GREEN ENERGY EXPO & CONFERENCE 2026 secretariat for any changes to the booth design plan.

**j. Property Damage**

Each exhibitor should protect items on exhibit and are not allowed to drive nails and screws into the walls and floors. Furthermore, exhibitors are not allowed to use painting materials that are indelible in case of spilling on the floors, roofs and raw materials of the booth. Violators must compensate EXCO for damages.

**k. Maintenance of Hazardous Materials**

All dangerous items to be exhibited need to be reported to the organizers before bringing them into the event. Exhibitors are also required to take necessary safety measures to maintain the items.

**l. Sub-Leasing**

The exhibitors are not allowed to sell or sublet the booth to anyone without an approval from the organizers. Parents companies, affiliates and subsidiaries are exceptions.

**m. Cleaning**

The INTERNATIONAL GREEN ENERGY EXPO & CONFERENCE 2026 secretariat will keep the hallways and shared space clean before and after the show and the INTERNATIONAL GREEN ENERGY EXPO & CONFERENCE 2026 secretariat also take care of trash bins during the show. All wastes produced during the construction of the booth are to be removed by the exhibitors in charge.

**n. Wiring**

The work of wiring in booths and displayed items should be done in compliance with the relevant rules and regulations of Korea. (Articles 3) The same applies to the construction of display facilities.

**B. Miscellaneous**

**a. To Avoid Predicaments**

Each exhibitor should refrain from any activities that may cause troubles at the show and should try not to disturb other booths.

**b. Practivities**

Exhibitors must have an exclusive right given by INTERNATIONAL GREEN ENERGY EXPO & CONFERENCE 2026 secretariat for marketing, holding conferences and handing out of any samples and gifts outside the designated area. That is, all demonstrations and promotional activities are only permitted in the designated area. This is to avoid any disorders caused by these activities. Exhibitors should therefore clear the aisles and the surrounding area.

**c. Sales Promotion**

The exhibitors may hand out samples and gifts only in the authorized booths. But those with exclusive right given by the INTERNATIONAL GREEN ENERGY EXPO & CONFERENCE 2026 secretariat will be able to hand them out at the areas other than the designated places.

**d. Recruitment**

If the exhibitors need to carry items, sign boards and brochures for recruitment purpo

se, allowed to INTERNATIONAL GREEN ENERGY EXPO & CONFERENCE 2026 secretariat.

**e. Odor**

Anything emitting an unpleasant odor is prohibited.

**f. Special Exhibition**

Individual exhibitors are not allowed to display items without an approval from the INTERNATIONAL GREEN ENERGY EXPO & CONFERENCE 2026 secretariat before and after the show hours of the exhibition.

**g. Show Hours**

The INTERNATIONAL GREEN ENERGY EXPO & CONFERENCE 2026 secretariat has the authority to set the opening hours and the days for booth installation and dismantling. Exhibitors are not allowed to dismantle booths before the show officially ends.

**h. Occupier's Obligation**

Under any circumstances, all exhibitors are required to pay the full rental fee of the entire space as accorded in the original Contract. In the event that an exhibitor fails to meet the deadline for displaying items, INTERNATIONAL GREEN ENERGY EXPO & CONFERENCE 2026 secretariat obtains the right to use the booth for other purposes. Furthermore, exhibitors who fail to submit the lease to the INTERNATIONAL GREEN ENERGY EXPO & CONFERENCE 2026 secretariat will lose their preferential rights to the booth.

**i. Sales Regulation**

Sale of items for cash during the exhibition will not be permitted. However, mail orders may be taken within the show period. The exhibitors should also be aware of the safety rules of the exhibits and public sanitation prior to the opening date. Unauthorized ads and sales are prohibited.

## **9. Event Regulations for Exhibitor**

**A. Objective**

These regulations are designed to prevent events from getting overheated and to promote convenience for exhibitors and visitors. There are no restrictions for event programs and contents, as long as they are morally acceptable.

**B. Space**

Programs should take place within the assigned booths only and are not allowed in pathways or shared space.

**C. Scope of Events**

The format of the presentation is based on the visitors according to their item of interest, followed by a product explanation.

**D. Application**

Exhibitors should fill in forms related to events and submit them to INTERNATIONAL GREEN ENERGY EXPO & CONFERENCE 2026 secretariat and receive a registration number. All equipment is to be reported, otherwise exhibitors will not be entitled to raise any complaints should it get rejected.

**E. Restriction**

Events should not disturb neighboring booths in principle.

**a. Sound equipment will only be permitted if the sound is under 85 db, when tested 3 meters from the used area.**

**b. Video equipment: will only be allowed if they do not hinder exhibits of others.**

**F. Penalty for Violation**

Any hindrance of the event or disturbance of other exhibitors will be penalized. Exhibitors

**should not submit compensation for any damages caused by INTERNATIONAL GREEN ENERGY EXPO & CONFERENCE 2026 secretariat's action in force to control the regulation. Since these regulations have been set to maintain the principles of operation and to promote an atmosphere for official business, they will be effective from the day of application to the closing day.**

## 10. Appendix

### Construction Contractor List

#### ○ Booth Design

No.	Company	Manager	TEL.	E-mail
1	Sunwoo Deco	Seo Hyun-jung	02-743-6409	sunwoodeco@daum.net
2	Design Saem	Lee Geun-hee	02-927-3012	lelek@nate.com
3	Create Associates	Kim Jang-young	02-333-6260	kimjy@cree8.co.kr
4	Exhibition Space Co., Ltd.	Kim Deok-gyu	02-2648-9330	jeonsiok@naver.com
5	The Wise Co., Ltd.	Kim Sung-kyung	02-713-5505	wise@the-wise.co.kr
6	GS Design Co., Ltd.	Lee Sang-hee	02-3143-5228	shks007@hanmail.net
7	Gonggan Vibe Co., Ltd.	Park Hyun-seok	02-3298-6790	manager@spacevibe.co.kr
8	Pranel E&T	Jeon Mi-jin	02-718-9934	flanel02@naver.com
9	ANA Booth System Co., Ltd.	Ahn Sang-hoon	02-6383-3517	boothzone@hanmail.net
10	A Design Group Co., Ltd.	Choi Su-jin	02-323-2090	aspace@agroup.kr
11	SD Group The Scenic Design Co., Ltd.	Park Sung-woo	02 703-5195	stv0318@naver.com
12	Lime Communications Co., Ltd.	Moon Ji-sun	02-2671-9212	moon@limecomm.kr
13	Dinomad Co., Ltd.	Dinomad	02-337-2583	001@dnmd.com
14	Paran D&S Co., Ltd.	Han Yoon-mi	070-4848-1598	0701parandns@naver.com
15	CSTech Plus	Lee Jung-han	02-3143-4056	juany67@cstec.co.kr
16	Design Chuk Co., Ltd.	Kim Eun-sook	02-6925-1825	eun242@hanmail.net
17	GNBK Co., Ltd.	Kwon Hyuk-sung	02-974-7199	gnbk2018@naver.com
18	Art Point Co., Ltd.	Park Yu-jin	02-792-7193	mail@artpoint.co.kr
19	Seoul Booth Adcom Co., Ltd.	Kim Su-bin	02-6959-4488	seoul6004@naver.com
20	Daeunbi Co., Ltd.	Kim Jun-min	02-761-5898	dauan-b@hanmail.net
21	Thunderbolt Co., Ltd.	Park Won-seon	02-3667-4363	thunder4363@naver.com
22	Big Pine Tree Co., Ltd.	Kim Mi-sook	02-598-1348	kmswow@hanmail.net
23	JSZ Korea Co., Ltd.	Je Tae-young	02-813-4649	jedkorea@gmail.com
24	Group M Co., Ltd.	Park Hee-joon	031-915-3300	groupmco88@naver.com
25	EPIC Design Group Co., Ltd.	Lee Joo-yong	02-6959-3950	jy@epicdesign.co.kr
26	TJCom Co., Ltd.	Choi Eun-a	02-501-1133	tjcommbox@hanmail.net
27	Maeum Design Co., Ltd.	Hong Wan-seok	02-3489-1109	maumdesign@maumdesign.co.kr
28	EZTech International Co., Ltd.	Kim Yoon-jung	070-4910-8706	julieso72@iztec.co.kr
29	Mir D&C Co., Ltd.	Han Gang-su	02-534-7997	mirdnc@naver.com

30	WPM Co., Ltd.	Kim Seung-yeon	02-563-2009	tax@wepm.co.kr
31	Space with Stories Co., Ltd.	Lee Seon-je	02-3445-5532	eraboo21@nate.com
32	I-Eum International Co., Ltd.	Kim Jun-young	02-549-1824	aaron@eum-i.com
33	Demos Co., Ltd.	Lim Yu-rim	02-6925-3880	tax@d-mods.com
34	JDIS Co., Ltd.	Kim Su-jeong	051-866-2300	ds2353@hanmail.net
35	Pico Korea Co., Ltd.	Lee Jae-hyung	02-558-3240	dieter.lee@pico.com
36	Kyungdong Planning Co., Ltd.	Heo Min-deulle	02-2038-5905	kyoung-dong@hanmail.net
37	BAON E&I Co., Ltd.	Lim Ji-hong	02-574-7742	hong28@baoneni.co.kr
38	SNTCom	Seo Ja-young	010-2299-0601	jay425@naver.com
39	Wisdom Co., Ltd.	Kim Ho-jin	02-2065-1174	wisdom-2014@hanmail.net
40	Premier Plan Co., Ltd.	Kang Yun-jin	02-865-0100	kyj@premierplan.kr
41	ONE S 3D Co., Ltd.	Yang Sun-mi	02-882-9114	8829114@naver.com
42	MD Plan Co., Ltd.	Moon Jeong-ho	02-859-7608	eraboo22@nate.com
43	ZENCOS Korea Co., Ltd.	Park Ji-yoon	070-7865-2202	info@gencos.co.kr
44	Top Standard Co., Ltd.	Choi Eun-mi	010-5555-5775	topcem0319@naver.com
45	Fiat Korea Co., Ltd.	Kim Yoon-seong	010-9020-6418	jakefiart@naver.com
46	Bo-in C&I Co., Ltd.	Park Jung-won	02-556-9395	boin0000@naver.com
47	Jungang Exhibition Co., Ltd.	Kim Jin-hang	02-3445-7775	jafair01@daum.net
48	APAX Design Co., Ltd.	Ki Chan-ho	031-925-9938	nice1660@naver.com
49	INSTAR Co., Ltd.	Kim Do-yoon	02-543-6624	insta@insta.kr
50	Wonil Design	Lee Ho-jong	02-547-6415	one1design@daum.net
51	SYP Associates Co., Ltd.	Kim Hong-jun	02-6000-4960	sypasypa@naver.com
52	MBIC Co., Ltd.	Moon Hee	02-553-3552	mbig@mbig1998.com
53	Bizmacom Co., Ltd.	Kim Jeon-young	02-2175-3753	janice@bizmarcomm.com
54	GID Communications Co., Ltd.	Kim Sik	010-2694-6994	gidcomm@naver.com
55	Ace Marketing Co., Ltd.	Ryu Chang-woo	02-541-2886	aiden@acemarketing.co.kr
56	EXPlan Co., Ltd.	Jang Seo-kyung	02-538-8001	explan2@naver.com
57	The InM Co., Ltd.	Ji Gwon-su	02-508-2974	block2012@naver.com
58	Zero D&C Co., Ltd.	Song Jang-uk	02-553-3311	jwsong@zerodnc.com
59	EIP Communications Co., Ltd.	Park Hee-sun	031-8028-3020	happyjjang11@naver.com
60	O2 P&D Co., Ltd.	Song So-jung	02-562-3236	hks8064@o2pnd.co.kr
61	JL Company Co., Ltd.	Jung Chang-kyung	031-528-1190	rental119@hanmail.net
62	Unimoto	Hwang In-seong	070-8796-9613	unimotto@unimotto.co.kr

63	E&W Design Co., Ltd.	Yu Yang-ho	02-538-1873	yooyh@enwdesign.co.kr
64	Wizen Co., Ltd.	Song Sun-kyung	02-561-3767	sun@wizeen.com
65	About D&P Co., Ltd.	Cheon Mi-kyung	02-553-3288	aboutdnp@naver.com
66	The Lab Associates Co., Ltd.	Ryu Min-a	02-3288-3519	ryu_91@THE-LAB.kr
67	JBCOM Co., Ltd.	Jung Hee-seo	02-512-1214	jbcom68@naver.com
68	Sangsangisang Co., Ltd.	Choi Gyu-sun	02-413-6552	kodesi@naver.com
69	Ready One Co., Ltd.	Choi Young-geun	02-556-3694	y1006k@hanmail.net
70	AP Architecture Co., Ltd.	Kim Young-su	032-512-2331	kys@aproway.com
71	The Stage Co., Ltd.	Kim Yong-su	1522-9221	info@thestage.co.kr
72	Design Seed Co., Ltd.	Jeon Gi-hyun	02-508-7730	seednd@naver.com
73	Grooming Design Co., Ltd.	Moon Byung-sung	02-402-8282	topjeonsi@naver.com
74	Gato Direction Co., Ltd.	Kim Chang-hoon	02-2269-4996	gato4996@daum.net
75	Nest Co., Ltd.	Lee Myung-jin	031-446-4617	nestzone@naver.com
76	TGAC Korea Co., Ltd.	Bang Hee	02-3443-6245	jinny@tgackorea.com
77	Bind Design Co., Ltd.	Jeon Hae-kyung	070-8064-0118	vinedesign777@daum.net
78	Design Easy Communication Co., Ltd.	Seo Jin-i	031-575-4373	dec1700@naver.com
79	Ellim	Yeo Young-uk	031-862-5240	elim5240@naver.com
80	Apple Exhibition	Kim Dong-gu	031-911-5277	appleevent@naver.com
81	InterExpo	Moon Shin-gi	010-4251-8826	skmoon@interexpo.kr
82	Eldora	Kim Jeong	02-6204-0775	0112249305@nate.com
83	Into Design Co., Ltd.	Kim Yoon-joo	031-942-0618	into0618@naver.com
84	Design Namu Co., Ltd.	Lee Sang-yeol	010-4599-2310	hy2054@daum.net
85	Gon House Co., Ltd.	Kim Mi-kyung	010-2724-9663	mk@gonhaus.com
86	AMI Co., Ltd.	Cho Eun-hye	1644-9078	ahmigogo@naver.com
87	TEAM Co., Ltd.	Lee Mi-sun	031-512-0022	tiim00@naver.com
88	Direct Co., Ltd.	Jung Hae-won	031-856-4114	kurtjeong@naver.com
89	BMS Co., Ltd.	Kim Sun-joo	02-2662-3523	s_joo@bmsplan.co.kr
90	Samho Industry Co., Ltd.	Park Yu-na	02-335-3505	samho35@e-samho.com
91	Exhibition Planning Teum	Han Kyung-hee	031-905-0507	teum7@naver.com
92	SMP Co., Ltd.	Han Woong	031-985-3524	smpmaster@naver.com
93	GEO Design	Oh Hyo-seok	031-526-7712	zio_graphic@naver.com
94	Younggwang Art Co., Ltd.	Lee Jin-young	032-348-6040	jyoulove@naver.com
95	Yujin Associates Co., Ltd.	Kim Hyung-seop	02-3664-3786	chris@eugene-co.kr

96	M2 Space Co., Ltd.	Cho Woo-jung	070-8959-8381	viviancho@m2space.kr
97	Maps Behold	Kwon Jun	010-8895-4381	mapsbehold@naver.com
98	Space Craft Co., Ltd.	Kim Seo-hee	02-6956-6908	seohee5889@s-craft.co.kr
99	Messebau Co., Ltd.	Lee Seung-hye	031-913-8077	mbau@mbau1.com
100	QBest Co., Ltd.	Moon Mu-hyun	010-5525-8064	joshmoon@nate.com
101	Replanner Co., Ltd.	Lee No-yeon	042-863-8204	lihua_keonyoung@daum.net
102	CJR Co., Ltd.	Lee Jae-gun	043-235-4466	cjr9985@naver.com
103	DFrox Co., Ltd.	Heo Sun-young	02-6959-4555	zoe0811@prox.co.kr
104	Hector Communication Co., Ltd.	Kim Young-do	02-2264-8411	ydk@hector.co.kr
105	Innocept Development Co., Ltd.	Kim Gwang-nyeon	02-6952-3242	kn.kim@innocept.co.kr
106	Able ES Co., Ltd.	Choi Bora	02-6267-7611	borah@able-es.com
107	Doho Co., Ltd.	Kim Ho-cheol	02-834-2010	www1993@naver.com
108	NEX Design Planning Co., Ltd.	Park In-young	02-542-2001	cabotin_8494@naver.com
109	Future EO Co., Ltd.	Oh Ui-rok	02-462-4780	mirae@yio.co.kr
110	Behavemade Co., Ltd.	Jang Seung-beom	02-535-0912	jsb@bhaymade.com
111	Design INEX Co., Ltd.	Lee Geon-sil	02-456-9542	designinex0ks@gmail.com
112	H&Partners	Kim Jae-hoon	02-942-3937	h_and3937@naver.com
113	IrinD	Cho Haneul	070-7848-5252	support_2@irindesign.co.kr
114	Design View	Kim Hyun-a	02-511-1727	hyuna@thedesignview.com
115	Kingsman Co., Ltd.	Yoon Chae-ri	02-555-2660	cherry.yoon@kingsmen.co.kr
116	Meat Design Co., Ltd.	Lee Yeon-joo	02-548-9878	leeyj8603@naver.com
117	Decore Co., Ltd.	Lee Seung-hee	02-515-0001	tax@decree.co.kr
118	Wilbee Communications Co., Ltd.	Heo Sung-hwan	010-3272-1901	hurs@willb
119	Trade World Co., Ltd.	Park Sung-min	02-511-9022	paul@tradeworld.co.kr
120	Diat Interactive Co., Ltd.	Kim Dong-hyun	02-517-8857	dhkim@dart.co.kr
121	IDium Co., Ltd.	Sung Hyung-jun	02-514-2404	shj2654@naver.com
122	Haeul Design	Kim Ji-won	02-540-0063	haeuld1@naver.com
123	Rishy Story	Lee Su-jin	02-3448-1110	postmaster@rishiyagi.com
124	RNA Co., Ltd.	Noh Jae-hee	02-573-7522	yjs@irna.co.kr
125	Cocoon Co., Ltd.	Kim Mi-jin	031-763-2414	cocoon@cocoon.or.kr
126	Storyda Co., Ltd.	Jung Eun-joo	02-545-5821	emerald@storydaa.com
127	Artwin International Co., Ltd.	Moon Mi-ran	02-517-2080	mmr729@art-win.co.kr
128	Raon Space	Lee Su-haeng	070-8816-5205	sea8657@hanmail.net

129	Shinkwang C&T Co., Ltd.	Ko Se-min	024-74-7573	skad@skad.co.kr
130	Smile Communication Co., Ltd.	Sung Jung-hyun	070-7555-3461	leo@smilecomm.co.kr
131	Qudos	Jung Ui-joo	02-420-8596	kudos8596@naver.com
132	JNetCom	Yoon Chang-yeop	02-577-6286	jenc2004@jenc.co
133	Korea ENI International Co., Ltd.	Jung Hee-jae	02-563-8670	messeworld@daum.net
134	Now Environmental Design Co., Ltd.	Kim Mi-young	02-575-1702	sarang9671@nate.com
135	EFACE Co., Ltd.	Lee Ah-reum	02-529-2350	epace2006@naver.com
136	Lescom Co., Ltd.	Heo In-sun	02-2088-8762	dg1479@naver.com
137	Cube Line Communication Co., Ltd.	Oh Joo-hyun	02-6959-2590	iya0303@naver.com
138	Studio Bloom Co., Ltd.	Ryu Je-won	02-2631-7702	idea@13100m.net
139	Gahyun Planning	Ji Moon-sun	031-423-6684	6684@gahyun.kr
140	Design 195	Jang Dong-gi	02-421-1950	jdk@design195.com
141	ExpoView Co., Ltd.	Lee Yong-jin	02-3413-3730	expoview@naver.com
142	Mountain Display Tech Co., Ltd.	Lim Jeon-bin	02-422-1888	chomdt@nate.com
143	Trend Design Co., Ltd.	Lee Kyung-cheol	02-421-1009	mail2da@korea.com
144	NuriAn E&C Co., Ltd.	Byun Da-som	02-420-3850	nurianenc@nate.com
145	Head Plus Co., Ltd.	Kang Tae-il	080-443-6699	kti1968@naver.com
146	Design Need Plus Co., Ltd.	Kwon Tae-woon	010-8270-6044	ktw000@nate.com
147	Podium Design Co., Ltd.	Lee Jong-ho	02-417-9475	lee6031@nate.com
148	Design OB Co., Ltd.	Kang Mi-jung	02-421-3513	soo@designob.co.kr
149	SP Interactive Co., Ltd.	Park Kwon-il	02-2038-0897	sp.i@hanmail.net
150	Design EX Korea Co., Ltd.	Lee Hwal	02-2157-8061	sfrecon748@hanmail.net
151	Yuil Architecture	Kang Dae-yeon	02-908-5304	kyunja68@naver.com
152	Sun System	Park Yong-jun	010-3732-7099	yjpa@hanmail.net
153	Nara Design Co., Ltd.	Cha Jin-hee	02-557-0481	jhcha6967@inaradesign.co.kr
154	Sungho Design	Lee Kang-sung	031-918-6771	sunghodesign@daum.net
155	Aizen Exhibition Culture	Ko Eun-jung	02-2661-1261	izen031@naver.com
156	GMC Messe Co., Ltd.	In Byung-cheol	02-556-9082	info@gmcmesse.com
157	Wide Planning Co., Ltd.	Kim Jong-dae	02-3453-7563	wideplan@naver.com
158	Blueman Group Korea	Lee Joo-young	02-402-2076	blueman.jenny0@gmail.com
159	Needs Space Design Co., Ltd.	Kwon Oh-sung	02-575-4337	osgwon@nizspace.com
160	Design TT	Hwang Tae-won	02-553-1233	designtt88@naver.com
161	Boom Communication Co., Ltd.	Jung Ye-jin	02-512-6763	boomcom29@naver.com

162	Infinity Associates Co., Ltd.	Miok Oh	02-3462-6517	hyolkun@infinid.co.kr
163	Poem Design Co., Ltd.	Jaejung Seo	02-6241-7500	jason.seo@4mdesign.co.kr
164	JCom Design Co., Ltd.	Youngyeol Seo	02-474-3855	seo4670@hanmail.net
165	Design Steelers Korea Co., Ltd.	Taeyeon Kim	02-577-5960	dsk@design2006.co.kr
166	Interblue Communication Co., Ltd.	Misoon Shin	02-501-0836	msad@interblue.co.kr
167	The Welcome Co., Ltd.	Chungseon Min	02-555-4030	mcs@thewelcome.co.kr
168	Design Plus Korea Co., Ltd.	Junghwa Lee	010-5382-7234	designpluskorea@gmail.com
169	XD	Soonjung Park	02-532-5080	soon@xdcompany.us
170	Mano I&I Co., Ltd.	Hyosim Lee	033-242-6465	post@manoeni.com
171	Expolink Korea Co., Ltd.	Minji Kim	02-2088-1674	kmj@expolink.co.kr
172	International Service Business Co., Ltd.	Mijeong Yoo	02-525-3711	ymj@e-isb.com
173	Dawon Space Co., Ltd.	Dongjae Shin	02-577-9660	dawons@dawons.com
174	M3G	Seungyeop Baek	010-4577-9064	designm30@naver.com
175	Idea Platz	Juntae Cho	02-857-0203	jtcho@edeaplz.com
176	Fractal ENC Co., Ltd.	Youngsun Ko	070-4337-2369	fractal45@naver.com
177	Pro Design Group Co., Ltd.	Jungmin Lee	010-8716-8296	jayem@pro-design.co.kr
178	Admin Co., Ltd.	Jaeseon Shin	061-333-0995	admin_master@admco.kr
179	Super Plan	Haekyung Jeong	02-6238-1001	003@superplan.kr
180	Durian Lab	Daeun Kim	02-878-3847	hadassah_k@jddigitalstudio.com
181	Ewon Planning Co., Ltd.	Suyeon Kim	031-5177-7500	eone7500@hanmail.net
182	Design Easy Rental Mall Holdings Co., Ltd.	Jeong Namgung	070-4910-8736	nkj0716@iztec.co.kr
183	Demos Plus Co., Ltd.	Heeyoung Jang	02-2205-4801	tax@dmodsplus.com
184	A&T Design Co., Ltd.	Jihyang Song	02-6949-1141	antdesign_@naver.com
185	C3 Lab Co., Ltd.	Gyesu Cho	031-949-4596	c3_design@naver.com
186	Tip Fairs Co., Ltd.	Hyeyoung Han	02-6485-4414	tipfairs@nate.com
187	CC Entercom Co., Ltd.	Joongon Yoo	010-4650-7373	ccentercom@naver.com
188	Yuseon Ad Plan Co., Ltd.	Jongok Shin	042-632-3007	dbtjs5563@hanmail.net
189	ACompany Co., Ltd.	Jiyoung Lee	070-4896-1934	bill@accompanyinc.com
190	Power Architectural Design	Kyeongran Hwang	041-577-7038	kjs3041006@naver.com
191	ENAD Co., Ltd.	Jinchul Jeong	042-538-4002	enad@enad.kr
192	Winergy BM Co., Ltd.	Eunyoung Kim	042-483-4156	winnergbm@hanmail.net
193	Open Planning Co., Ltd.	Jihyun Jeong	043-259-8100	gori1977@nate.com
194	SJ Exhibition Design Co., Ltd.	Suho Hong	053-382-0606	sjdesignex@naver.com

195	WOOIN Co., Ltd.	Mo Boyoung	031-926-3112	wooin3112@naver..com
196	Mirae Exhibition	Kim Hyojung	070-8794-6953	iq4442@nate.com
197	Harang Planning Co., Ltd.	Ha Yujung	051-782-0893	harang2018@naver.com
198	INNEBLE Co., Ltd.	Lee Jihye	070-8854-0609	design-inna@naver.com
199	Space Environment Design Co., Ltd.	Choi Yeonju	032-812-0607	sed2121@naver.com
200	TUNE Architectural Design Co., Ltd.	Noh Sohi	053-951-1673	td2690404@naver.com
201	Messeesang Co., Ltd.	Park Kyunghee	02-6121-6330	khpark.es@esgroup.net
202	BNS INT Co., Ltd.	Ha Yunmi	02-486-2192	bnsint2015@naver.com
203	Ttuktak Production Studio	Oh Taekwon	02-6956-6615	hello@tuktak.kr
204	Design Valley	Chae Junsu	063-214-9966	valleyco2023@naver.com
205	Inovision Co., Ltd.	Seo Seokhun	031-898-2855	space4m@naver.com
206	Daehyun I&E LLC	Kim Yuri	02-6953-4269	dh4268@dh-ine.com
207	Messe Global Co., Ltd.	Kim Kyunghee	053-383-9865	sonamu3332@naver.com
208	JINU Community Co., Ltd.	Jung Seondae	062-419-0030	yeolrin1@naver.com
209	WJ AD Co., Ltd.	Kim Guktae	053-421-6530	kuktae@naver.com
210	Dio Associates Co., Ltd.	Gong Minjung	062-514-9652	doaso55@naver.com
211	Geometry Co., Ltd.	Kim Sungjin	070-4693-6710	kimexpo@daum.net
212	Taeri Co., Ltd.	Choi Jinyoung	042-522-5607	teriteri22@naver.com
213	JNC Company Co., Ltd.	Choi Seohyun	042-584-3311	jc.2018@daum.net
214	JWell Design Lab Co., Ltd.	Lee Jaerin	02-516-7490	j3137@jaywell.co.kr
215	Kangho Exhibition Planning Co., Ltd.	Lee Unghee	02-525-8754	planning@exgangho.co.kr
216	Design Gram Co., Ltd.	Park Kihong	010-5229-0204	archi04uk@gmail.com
217	Solution Plus Korea Co., Ltd.	Son Hojun	02-6959-5799	jackson@solutionpk.com
218	Jeonjija Co., Ltd.	Jung Youngshin	031-966-7946	info@exruler.com
219	Guru Design	Kim Taekju	010-7167-7815	care0105@naver.com
220	Magpie D&C Co., Ltd.	Choi Wonhyuk	010-7357-9753	tommy6895@magpiednc.com
221	IN Creative Corp.	Lee Nakyeong	070-8630-5001	in@i-n.co.kr
222	Toms Design	Lee Seongsim	02-6265-6031	sim.lee@toms-design.com
223	Design Human Co., Ltd.	Kim Jieun	055-264-3801	force971@hanmail.net
224	Design Value Co., Ltd.	Kang Myunggoo	02-867-9909	dv_kang@naver.com
225	N.Y. Associates Co., Ltd.	Park Jungmi	02-2157-7792	jeongme@nate.com
226	Olive Design Co., Ltd.	Lee Junwon	032-326-0804	iniceguy2000@naver.com
227	AKINOS Co., Ltd.	Hwang Hyejin	02-6415-8000	admin@archinorth.com

228	ILPUM	Cho Dongsuk	053-765-9931	ip3634@naver.com
229	Peace Space Co., Ltd.	Lee Taekyung	053-755-2271	pspace2004@daum.net
230	UseOne	Jung Jiyeon	053-741-2107	uswon2107@naver.com
231	Nanam Communications Co., Ltd.	Kwon Sehee	053-742-7371	ksh658@naver.com
232	Yale Communications Co., Ltd.	Kwon Eunjung	053-743-2080	yeilcom@hanmail.net
233	SONAMU	An Youngdon	053-383-9867	wipung@naver.com
234	Bom Communications Co., Ltd.	Lee Haebong	052-277-0045	bongkhai@daum.net
235	Woori Communication Co., Ltd.	Jeon Changsu	053-384-6611	wooricom3@naver.com
236	EXCOPIA Co., Ltd.	Kim Sumi	053-381-2831	excopia1@hanmail.net
237	Rainbow Company Co., Ltd.	Yeo Haein	053-951-5555	point4455@daum.net
238	IM World Co., Ltd.	Sung Youngho	053-383-1130	imsky2007@naver.com
239	XALL Design Co., Ltd.	Na Junghoon	053-601-5139	exall@hanmail.net
240	Culture Bank Co., Ltd.	Park Yoonhee	053-384-7244	munhwabank8989@daum.net
241	Making Good World Co., Ltd.	Choi Hyunjoo	070-5138-9779	plan3003@hanmail.net
242	Leaders C&M Co., Ltd.	Kim Minchae	1533-3007	leaderscm@naver.com
243	Life Tech Co., Ltd.	Jang Mihyun	053-472-5411	life5411@naver.com
244	InDesign Worldwide Co., Ltd.	Kang Soyoung	02-554-5590	soyoung@indesignex.com
245	Four Seasons E&I Co., Ltd.	Lee Seoyul	031-911-5829	kdongok242@daum.net
246	Ium Associates Co., Ltd.	Ha Sumin	02-332-0809	smha@eum-ad.com
247	Plan Eight Architecture	Shin Hwisu	070-8633-2239	planeight@naver.com
248	AND& Co., Ltd.	Park Seona	02-546-1500	and-n@naver.com
249	Intro Design Co., Ltd.	Seo Hanna	02-733-8332	idz@introdzain.com
250	Big Fish Communications	Ban Yejin	02-533-2580	info@bigfishcomm.com
251	Design Parang Co., Ltd.	Kwon Bongjae	051-740-7981	exparan@daum.net
252	Irene Design Co., Ltd.	Bang Seonjae	070-5101-6167	support_1@irindesign.co.kr
253	FRIENDI Co., Ltd.	Shin Kyunghoon	02-431-0108	frien_de@naver.com
254	Artista Korea Co., Ltd.	Kim Taehyun	02-3454-1815	kth041124@gmail.com
255	Zenis Space	Jung Byungcheol	02-6952-6060	01@zenithspace.co.kr
256	KJ Tech	Jeon Soonhak	042-221-1727	sonaki1004j@hanmail.net
257	Wins Community Co., Ltd.	Oh Yoonjung	02-469-0073	winscomm@naver.com
258	TwoDot Co., Ltd.	Jeon Byungjoo	02-586-2012	admin@todot.co.kr
259	HSI&D Co., Ltd.	Kim Eunsun	031-962-2666	hsind1983@naver.com
260	Calling C&D Co., Ltd.	Lee Youngju	051-851-3273	callingcnd@naver.com

261	K-Plus Co., Ltd.	Kim Gi-ryeong	051-504-0211	kplus1207@naver.com
262	MS Global Co., Ltd.	Shin Seunghye	02-785-5801	msglo5801@naver.com
263	Design Color	Kim Hyesoo	055-276-6400	color6400@nate.com
264	Space Lab Co., Ltd.	Jo Aejin	055-265-2016	spacei2018@naver.com
265	Bro Design Studio	Lee Yujin	032-425-4992	brodesignstudio@naver.com
266	Landmark DFC Co., Ltd.	Choi Sungwon	02-424-1634	sabmis@nate.com
267	Uju C&D	Jung Yeonwoo	031-322-9188	woojoo9189@naver.com
268	Bugyeong Exhibition Design	Ahn Jongyeop	051-740-8400	jyan3926@naver.com
269	2M Joy	Jo Seongyong	051-902-9095	2mjoy@hanmail.net
270	YGK Design	Gi Yangju	051-621-0071	yangzookee@naver.com
271	MAC Design Co., Ltd.	Kim Jaenam	051-740-7567	seokman1055@naver.com
272	Well Design Co., Ltd.	Park Songyi	031-904-2434	apply@well-d.co.kr
273	Centum Co., Ltd.	Jang Sunhee	051-704-2396	7042396@daum.net
274	YEhol	Sung Donggyu	051-513-7774	yehol@yehol.com
275	Kyungsoo Industry Co., Ltd.	Moon Hyunsu	031-635-6360	hyeonsoo@kyungu.co.kr
276	Sewoon Art Company Co., Ltd.	Choi Okhee	02-324-5501	seunart@naver.com
277	Sequence Co., Ltd.	Kim Hyerim	031-792-3458	sequence0308@naver.com
278	VIEW Co., Ltd.	Kwak Yeonjeong	010-9345-9293	soon2674715@hanmail.net
279	Ikkeulim Design Co., Ltd.	Eun Jihyun	053-383-4223	4228hyun@hanmail.net
280	BoyDot Co., Ltd.	Jung Inhwa	02-2138-0412	office@voidot.net
281	Inno Ad Design Group Co., Ltd.	Park Seonyong	042-369-8000	at-ape@naver.com
282	Buildman Co., Ltd.	Kwon Won	02-6121-6484	kwonwon.es@esgroup.net
283	Design ES	Kim Jieun	070-8672-5853	kimjieun@designes.co.kr
284	MH Company Co., Ltd.	Park Eungbeom	031-981-1523	nterplus@naver.com
285	Nan Design	Sim Nami	02-400-0390	nami@nandesign.kr
286	Design Inside	Ryu Donggi	02-422-5643	finalmars@naver.com
287	Eoulrim Design Co., Ltd.	Kang Donghyuk	051-710-1292	depth_story@naver.com
288	Ian Company Co., Ltd.	Kim Mihwa	02-6013-3415	sara@ianncompany.com
289	Philip Expo Co., Ltd.	Lim Kwangjin	02-2634-0880	pillip112@naver.com
290	MOTUS Company Co., Ltd.	Kim Youngjin	02-3780-0055	yjkim@motuscompany.co.kr
291	M2M Design Group Co., Ltd.	Yu Jongsang	02-6959-1022	rex.yu@mtomdesign.com
292	Design Hon	Kim Taehee	051-987-0320	designhone@naver.com
293	Baker Plan Co., Ltd.	Kim Youngjin	02-2042-2327	baker0601@naver.com

294	GSE Co., Ltd.	Jeong Yunseok	02-2039-0298	matthew@gsewide.com
295	Marble Crew Co., Ltd.	Park Cheolgi	02-4801-1420	ryan@marvelex.co.kr
296	Studio Maverick Co., Ltd.	Kim Hakjae	031-425-2522	justin79@bananaspray.com
297	D.PE Co., Ltd.	Song Minsu	02-554-1210	david.song@defe.co.kr
298	MAD Design Studio Co., Ltd.	Jeon Yuha	02-540-7746	joy@maddstudio.com
299	Rabbit Co., Ltd.	Hwang Youngbin	070-4172-7775	andrew@rabbitspace.co.kr
300	The Most Planning Co., Ltd.	Kim Hyerim	042-826-1947	kh10326@hanmail.net
301	Dico Korea Co., Ltd.	Ryu Ran	02-866-5667	ran@dkor.co.kr
302	EXALL Co., Ltd.	Kim Jinyoung	02-6351-1094	hey_miss@naver.com
303	Diesel Co., Ltd.	Jang Myeongwan	02-504-0021	pdzmk71@nate.com
304	Design Gio Co., Ltd.	Lee Misuk	02-333-3611	mi@grandone.co.kr
305	The Interplan Co., Ltd.	Lee Nana	042-585-7810	inter7900@naver.com
306	1SMB Co., Ltd.	Lee Byeongyeong	02-3445-4585	mrbbing@naver.com
307	DK Agency Co., Ltd.	Kim Bonggyu	02-420-4088	bong761008@hanmail.net
308	Mirae Space Co., Ltd.	Cha Seungeun	053-791-4123	miraecnd21@naver.com
309	Design Exium	Son Jiyo	070-4260-0323	autumn1220@naver.com
310	D&C Company Co., Ltd.	Ju Heungsu	042-826-4370	dnc2034@hanmail.net
311	Design Taeyang Co., Ltd.	Kim Jonghak	031-533-2404	5274140@hanmail.net
312	H2I & C Co., Ltd.	Lee Saebom	02-6497-1101	h7@htwoinc.com
313	Jung ENT Co., Ltd.	Myeong Jiyeon	031-935-4514	zzjj2222@naver.com
314	From Us Co., Ltd.	Choi Jaehoon	02-6933-8277	jay@fromuskr.com
315	Da Vinci Design Space Co., Ltd.	Lee Heeju	031-388-0828	davincidesign@naver.com
316	Design Haneul	Lee Seoha	051-740-7620	diiha2@daum.net
317	Woori Retail Experience Korea Limited	Lee Dahee	010-4893-9060	lee.dahee@one-rx.com
318	Global CMS Co., Ltd.	Im Hanseop	070-8657-0443	MARVINLIM08@GMAIL.COM
319	PAN Co., Ltd.	Yoon Eunjun	032-654-6554	pan-kor@naver.com
320	Daesung Ad Co., Ltd.	Lee Suyeol	062-471-8001	ds88811@hanmail.net
321	IZEN Exhibition Culture Co., Ltd.	Han Jinyoung	070-8656-0480	hiehan777@hanmail.net
322	Philip Communications Co., Ltd.	Yang Donggun	02-407-3233	pillipcm@naver.com
323	Grida Housing	Shin Yohan	070-8670-0177	gridahousing2019@naver.com
324	Synafor U Co., Ltd.	Lee Nara	02-2272-5493	echo5493@naver.com
325	Design Form	Lee Youngju	051-740-8900	form1044@naver.com
326	ES Planning Co., Ltd.	Lee Byung sun	010-9180-6179	combirak@naver.com

327	Decore Co., Ltd.	Park Jong-gu	010-6282-7676	pjongk@naver.com
328	Design Hub Korea Co., Ltd.	Kim Jin-sung	010-3894-9111	think3204@naver.com
329	Green Wave Co., Ltd.	Bae Young-seop	010-7110-2242	gepeto@hanmail.net
330	Brightest Smile Co., Ltd.	Kim Na-yeon	010-4380-9713	the@bestsmile.kr
331	EL Plus Co., Ltd.	Kim Young-min	010-8602-7954	neo7954@naver.com
332	Taya Design Co., Ltd.	Jung Da-woon	010-5023-7969	tea-ya@nate.com
333	Factory Who Co., Ltd.	Lee Eun-sook	010-9115-6164	angol520@factoryhooo.com
334	Tobis Lab	Kim Jae-soon	010-2828-2616	justin@tobislab.com

## IV. Application Form

\* Directory Registration is ONLY available on the homepage.

No	Application	Deadline	Note	Remark
1	Interpreter Service	April 1st(Wed)	Email (renew@exco.co.kr)	Optional
2	Additional Utility Service	April 10th(Fri)	Email (renew@exco.co.kr)	Optional
3	Carry-out Report	On the Spot	Mandatory	On the Spot
4	Business Result Report			
5	Application for Overtime Work			

※ The schedule above is subject to change

<b>INTERPRETER SERVICE</b>	<b>FORM 1</b>
----------------------------	---------------

<b>Return to: Secretariat of Green Energy Expo 2026</b> EXCO (Daegu Exhibition & Convention Center) 10, Exco-ro, Buk-gu, Daegu, Korea 41515				<b>OPTIONAL</b>	
				DEADLINE	<b>April. 1st</b>
TEL	+82-53-601-5061	FAX	+82-53-601-5069		
<b>E-MAIL</b>	renew@exco.co.kr				
<b>COMPANY NAME</b>			<b>TEL</b>		
<b>ADDRESS</b>			<b>FAX</b>		
<b>PERSON IN CHARGE</b>			<b>E-MAIL</b>		
					<b>Booth Number</b>

<b>DETAILS FOR INTERPRETATION REQUEST</b>
---

<b>Company Type</b>			
<b>Contact Person</b>		<b>Number of Interpreter</b>	
<b>TEL</b>		<b>E-MAIL</b>	
<b>Language</b>	<b>Classification</b>	<b>Period</b>	<b>Amount</b>
English	USD 200 x days x person(s)	April ~	USD
Japanese	USD 200 x days x person(s)	April ~	USD
Chinese	USD 200 x days x person(s)	April ~	USD
<b>TOTAL AMOUNT</b>			<b>USD</b>

**Additional Requests**

- **Business Hours : 10:00~18:00**
- **If you need the interpreter to work overtime, you must pay an overtime pay (USD 20 per hour).**
- **For efficient interpretation service, please submit a brief introduction of your company and information of exhibited products in advance.**

<b>PAYMENT</b>
----------------

Please complete your payment on site directly to your interpreter.

<b>Note</b>	
-------------	--

The undersigned hereby applies for interpretation service as above.

202 . . . . .

**Company Name:**  
**Applicant:**  
**Signature:** \_\_\_\_\_

**ADDITIONAL UTILITY SERVICE****FORM 2**

Return to: Secretariat of Green Energy Expo 2026  
EXCO (Daegu Exhibition & Convention Center)  
10, Exco-ro, Buk-gu, Daegu, Korea 41515

**OPTIONAL**


TEL +82-53-601-5371 FAX +82-53-601-5069  
E-MAIL renew@exco.co.kr

DEADLINE

**April.  
10th**

<b>COMPANY NAME</b>		<b>TEL</b>		<b>Booth Number</b>
<b>ADDRESS</b>		<b>FAX</b>		
<b>PERSON IN CHARGE</b>		<b>E-MAIL</b>		

**ELECTRICITY**

 Please mark on , if you require using electricity for 24 hours.

Classification	Unit Price (per KW)		Quantity		Total
	Daytime	24 hours	Daytime	24 hours	
Single Phase 220V(60Hz)	USD 80	USD 100		<input type="checkbox"/>	USD
Three Phase 220V(60Hz)				<input type="checkbox"/>	USD
Three Phase 380V(60Hz)				<input type="checkbox"/>	USD
Three Phase 380V(60Hz) (for usage of rigging)				<input type="checkbox"/>	USD
<b>TOTAL</b>					<b>USD</b>

**OTHERS**

Classification	Unit Price	Quantity	Total
<b>Water Supply &amp; Drainage</b>	USD 200/EA	EA	USD
<b>Compressed Air</b>	USD 200/EA	EA	USD
<b>LAN</b>	USD 200/PORT	PORT	USD
<b>Barcode System</b>	USD 200/EA	EA	USD
<b>Heavyweight Rigging (Over 100Kg)</b>	USD 2000/EA	EA	USD
<b>Lightweight Rigging (Up to 100Kg)</b>	USD 500/EA	EA	USD
<b>TOTAL</b>			<b>USD</b>

202 . . . .

**Company Name:**  
**Applicant:**



<b>BUSINESS RESULT REPORT</b>			<b>FORM 4</b>	
Return to: Secretariat of Green Energy EXPO 2026 EXCO (Daegu Exhibition & Convention Center) 10 Exco-ro, Buk-gu, Daegu, Korea 41515			<b>MANDATORY</b>	
			<b>On the Spot</b>	
<b>COMPANY NAME</b>		<b>TEL</b>		<b>Booth Number</b>
<b>ADDRESS</b>		<b>FAX</b>		
<b>PERSON IN CHARGE</b>		<b>E-MAIL</b>		

<b>SUMMARY SHEET OF BUSINESS TALK</b>					
Section		Overseas (US \$)		Domestic (US \$)	
		Business Talk	Achieved Contract	Business Talk	Achieved Contract
April 22	Number of Cases				
	Amount	US \$	US \$	US \$	US \$
April 23	Number of Cases				
	Amount	US \$	US \$	US \$	US \$
April 24	Number of Cases				
	Amount	US \$	US \$	US \$	US \$

<b>BUSINESS TALK RECORD</b>						
No	Buyer		Details of the Business Talk			
	Nationality	Company	Item	Quantity	Amount	Estimated Contract Amount
					US \$	US \$
					US \$	US \$
					US \$	US \$
					US \$	US \$
<b>Note</b>						

Application For Overtime Work				FORM 5	
Return to: Secretariat of Green Energy Expo 2026 EXCO (Daegu Exhibition & Convention Center) 10, Exco-ro, Buk-gu, Daegu, Korea 41515				OPTIONAL	
TEL	+82-53-601-5371	FAX	+82-53-601-5069	On the Spot	
E-MAIL	renew@exco.co.kr				
COMPANY NAME		TEL		Booth Number	
ADDRESS		FAX			
PERSON IN CHARGE		E-MAIL			

DETAILS FOR APPLICATION					
Date	Exhibition Hall(s) to Be Used	Start Time	End Time	Total Hours Used	Usage Fee
4.19	<input type="checkbox"/> H2 <input type="checkbox"/> H4 <input type="checkbox"/> H5 <input type="checkbox"/> H6	:	:	:	
4.20	<input type="checkbox"/> H2 <input type="checkbox"/> H4 <input type="checkbox"/> H5 <input type="checkbox"/> H6	:	:	:	
4.21	<input type="checkbox"/> H2 <input type="checkbox"/> H4 <input type="checkbox"/> H5 <input type="checkbox"/> H6	:	:	:	

※ After-hours usage fee information (VAT included; payable by credit card by the organizer).

HALL 2	HALL 4	HALL 5	HALL 6
KRW 940,000/hour	KRW 960,000/hour	KRW 966,000/hour	KRW 966,000/hour

The undersigned follows the regulations of operating exhibition hall at EXCO and hereby applies for using exhibition hall for extra hours as above.

202 . . . .

Company Name:  
Applicant:  
Signature: \_\_\_\_\_